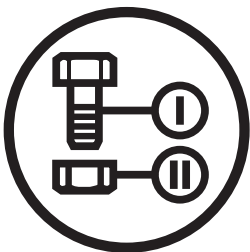


JOHNSON

Z52XF

967328101-00

Parts Manual
Zero Turn Mower



Please read the operator manual carefully and make sure you understand the instructions before using the machine.

When you need spare parts or support in service questions, warranty issues, etc., please consult the following professional:

This manual belongs to the machine with the manufacturing number:	Engine	Transmission

Manufacturing Number

The machine's manufacturing number can be found on the printed plate affixed to the engine compartment.

Stated on the plate, from the top are:

- The machine's type designation (I.D.).
- The manufacturer's type number (Model).
- The machine's serial number (Serial no.)

Please have the type designation and serial number available when ordering spare parts.

The engine's manufacturing number is stamped on one of the valve covers.

The plate states:

- The engine's model.
- The engine's type.
- Code

Please have these available when ordering spare parts.

The wheel motors and hydrostatic pumps have a barcode decal affixed at the rear.

Accessories Available	
Collection System -----	966 79 30-01
Mulch Kit -----	965 89 40-01

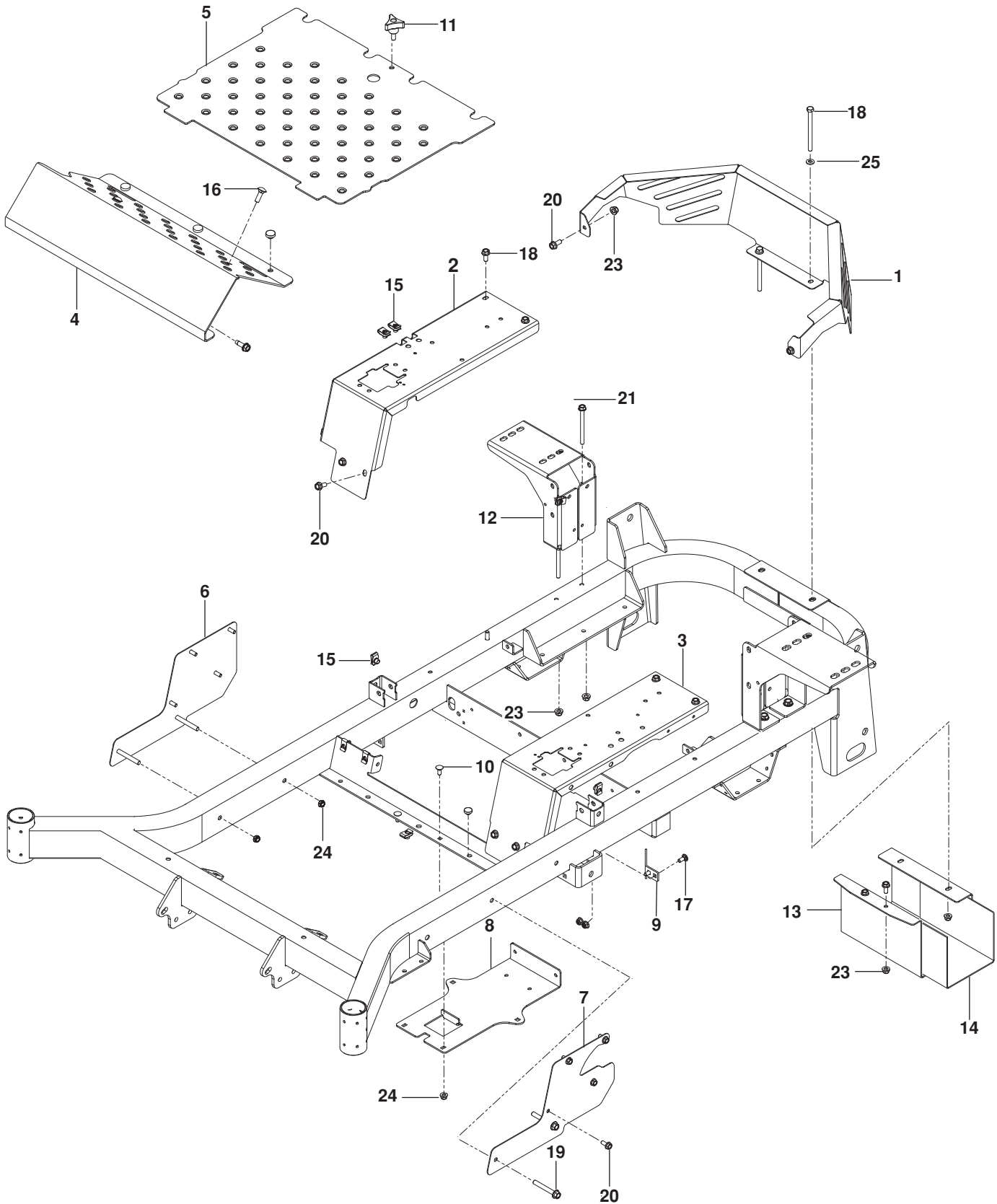
CONTENTS

FRAME.....	4
ENGINE PLATE.....	6
STEERING	8
IGNITION.....	10
PARK BRAKE.....	12
HYDRAULIC PUMP-MOTOR.....	14
WHEELS	16
MOWER LIFT / DECK LIFT	18
MOWER DECK / CUTTING DECK.....	20
SEAT	22
DECALS.....	24
ACCESSORIES.....	26
Blower.....	26
Bagger.....	28
Guard, Mount and Belt	30
Mulch Kit.....	32

Illustrations may or may not represent the actual assemblies and it is not recommended to use this manual as a guide to assemble or disassemble the mower.

NOTE: All fasteners are Grade 5 unless otherwise specified.

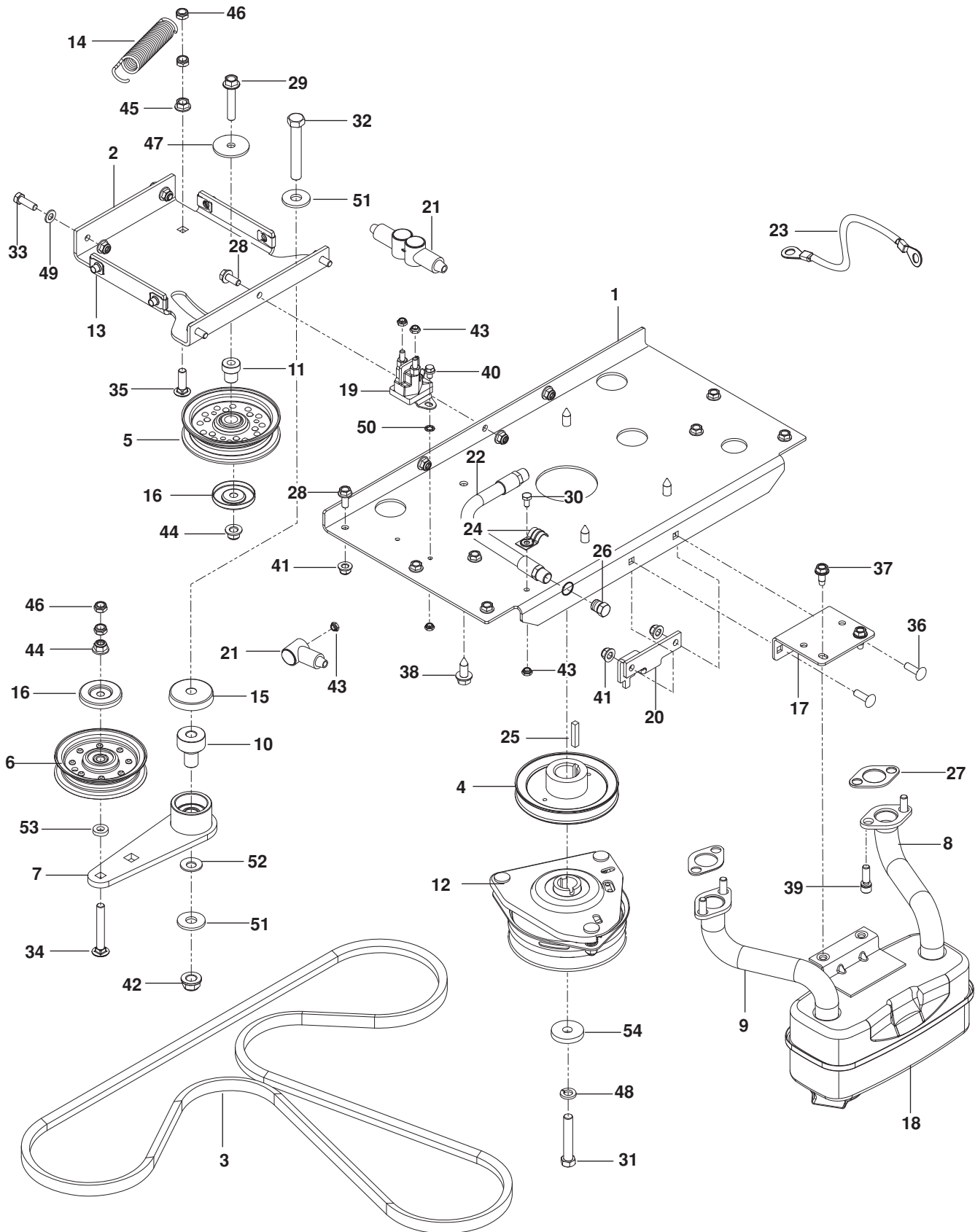
FRAME



FRAME

ITEM	PART NO.	QTY.	DESCRIPTION	ITEM	PART NO.	QTY.	DESCRIPTION
1..	576 87 85-03.....	1	GUARD, REAR RED	14..	539 13 28-59.....	1	SHIELD, HEAT
2..	577 25 69-03.....	1	PANEL, FILLER RT RED	15..	539 10 47-63.....	15	RETAINER, U TYPE
3..	577 25 68-03.....	1	PANEL, FILLER LT RED	16..	539 99 02-08.....	2	BOLT ⁵ / ₁₆ -18 x 1RD HD SQNK
4..	521 94 13-05.....	1	PLATE, FOOT REST RED	17..	539 99 03-16.....	6	BOLT ⁵ / ₁₆ -18 x ³ / ₄ RD HD SQNK
5..	574 89 16-03.....	1	PLATE, FOOT RED	18..	539 10 23-35.....	2	BOLT ⁵ / ₁₆ -18 x 4 HEX HD
6..	586 56 02-02.....	1	SIDE, RT RED	19..	539 13 17-81.....	5	BOLT ³ / ₈ -16 x 2 ³ / ₄ HEX FLG HD
7..	586 56 01-02.....	1	SIDE, LT RED	20..	525 46 47-01.....	20	BOLT ⁵ / ₁₆ -18 x ³ / ₄ HEX FLG HD
8..	575 01 72-02.....	1	PLATE, BATTERY BLK	21..	539 13 17-80.....	4	BOLT ⁵ / ₁₆ -18 x 3 ³ / ₄ HEX FLG HD
9..	505 25 64-01.....	2	STOP, DECK	22..	539 11 32-26.....	6	BOLT ⁵ / ₁₆ -18 x 1 HX THD FRM
10..	539 10 25-87.....	7	GROMMET, BUMPER	23..	539 11 28-99.....	24	NUT ⁵ / ₁₆ -18 HEX FLG NYLOC
11..	539 10 44-11.....	1	KNOB w/ STUD	24..	539 20 02-82.....	4	NUT ³ / ₈ -16 x 2 ³ / ₄
12..	575 53 36-02.....	2	MOUNT, TANK BLK	25..	539 99 01-88.....	2	WASHER ⁵ / ₁₆ SAE
13..	575 23 04-02.....	1	SHIELD, MUFFLER BLK				

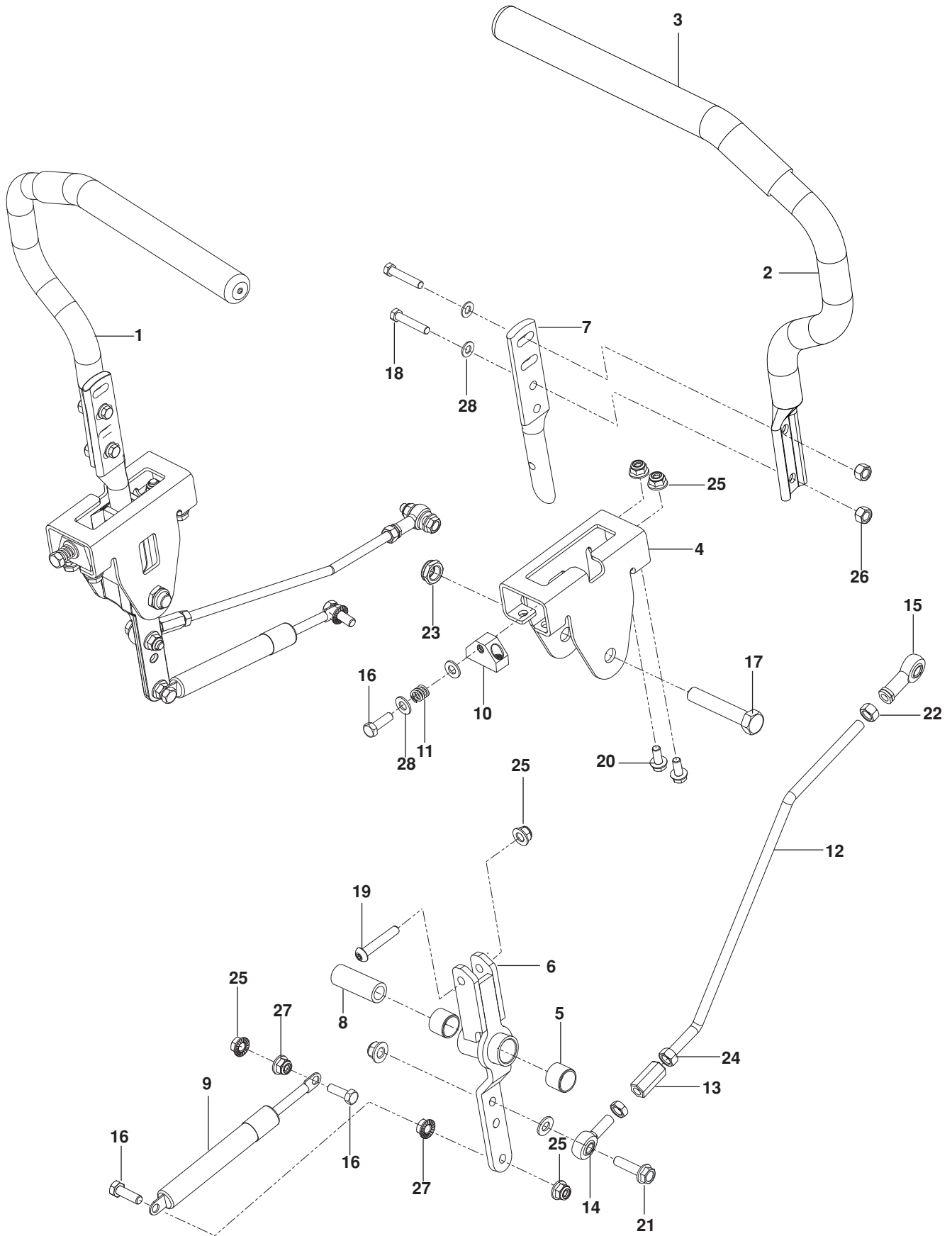
ENGINE PLATE



ENGINE PLATE

ITEM	PART NO.	QTY.	DESCRIPTION	ITEM	PART NO.	QTY.	DESCRIPTION
1..	574 84 63-02.....	1	PLATE, ENGINE BLK	31..	581 33 28-02.....	1	BOLT 7/16-20 x 2 1/2 HEX HD
2..	574 84 64-02.....	1	PLATE, IDLER SUPPORT BLK	32..	539 10 34-33.....	1	BOLT 1/2-13 x 3 1/4 HEX HD
3..	574 87 09-01.....	1	BELT, HYDRO	33..	539 99 02-09.....	2	BOLT 5/16-18 x 1 HEX HD
4..	585 81 37-01.....	1	PULLEY	34..	539 13 02-35.....	1	BOLT 3/8-16 x 2 3/4 RD HD SQNK
5..	539 97 66-88.....	1	PULLEY, IDLER	35..	539 10 04-13.....	1	BOLT 3/8-16 x 1 1/4 RD HD SQNK
6..	539 10 76-20.....	1	PULLEY, IDLER SECONDARY	36..	539 10 72-71.....	2	BOLT 5/16-18 x 1 RD HD SQNK
7..	510 04 16-03.....	1	ARM, IDLER w/ BEARINGS	37..	817 49 05-12.....	2	SCREW 5/16-18 x 3/4 THD FRM
8..	583 95 48-01.....	1	EXHAUST TUBE, RT	38..	817 12 06-16.....	4	SCREW 3/8-16 x 1 THD FRM
9..	583 95 45-01.....	1	EXHAUST TUBE, LT	39..	532 19 23-34.....	4	SCREW 5/16-18 x 3/4 SKT HD
10..	510 20 63-01.....	1	PIVOT, BEARING	40..	539 99 03-02.....	2	SCREW 1/4-20 x 3/8 THD FRM
11..	525 43 56-01.....	1	PIVOT, IDLER	41..	539 11 28-99.....	15	NUT 5/16-18 HEX FLG NYLOC
12..	532 17 93-35.....	1	CLUTCH	42..	521 99 11-01.....	1	NUT 1/2-13 FLG NYLOC
13..	539 10 47-63.....	4	RETAINER, U TYPE	43..	539 10 81-20.....	4	NUT 1/4-20 THIN NYLOC
14..	510 25 44-01.....	1	SPRING, PUMP	44..	521 99 65-01.....	2	NUT 3/8-16 FLG NYLOC
15..	539 11 46-62.....	1	SHIELD, DUST	45..	539 99 06-13.....	1	NUT 3/8-16 WHIZLK
16..	510 25 45-01.....	2	SHIELD, DUST	46..	539 20 02-82.....	4	NUT 3/8-16 JAM NYLOC
17..	575 22 99-02.....	1	BRACKET, MUFFLER BLK	47..	539 11 18-97.....	1	WASHER 3/8 SPECIAL
18..	539 13 16-04.....	1	MUFFLER	48..	539 99 02-47.....	1	WASHER 7/16 SLW
19..	532 19 25-07.....	1	SOLENOID	49..	539 99 01-88.....	2	WASHER 5/16 SAE
20..	585 81 36-01.....	1	STOP, CLUTCH	50..	539 99 00-53.....	1	WASHER 1/4 INT TOOTH LK
21..	532 13 15-63.....	3	INSULATOR	51..	539 10 95-54.....	2	WASHER 1/2
22..	584 82 55-01.....	1	HOSE, DRAIN	52..	539 11 55-28.....	1	WASHER 1/2 BELLEVILLE
23..	539 10 27-57.....	1	CABLE, POSITIVE	53..	539 10 95-62.....	1	WASHER 3/8
24..	539 10 13-63.....	1	CLAMP	54..	539 10 65-04.....	1	WASHER, HARDEN
25..	539 91 27-57.....	1	KEY 1/4 SQ x 1 1/4	NOT SHOWN			
26..	585 80 71-01.....	1	PLUG, OIL DRAIN	532 19 83-16	1	ADAPTER, CLUTCH	
27..	586 83 99-01.....	2	GASKET, MUFFLER KAW	-----	1	ENGINE, Kohler ZT730 23 HP	
28..	874 49 05-12.....	11	BOLT 5/16-18 x 3/4 HEX FLG HD			For engine service and replacement parts, see a Kohler dealer	
29..	874 49 06-32.....	1	BOLT 3/8-16 x 2 HEX FLG HD				
30..	539 99 00-71.....	1	BOLT 1/4-20 x 1/2 HEX HD				

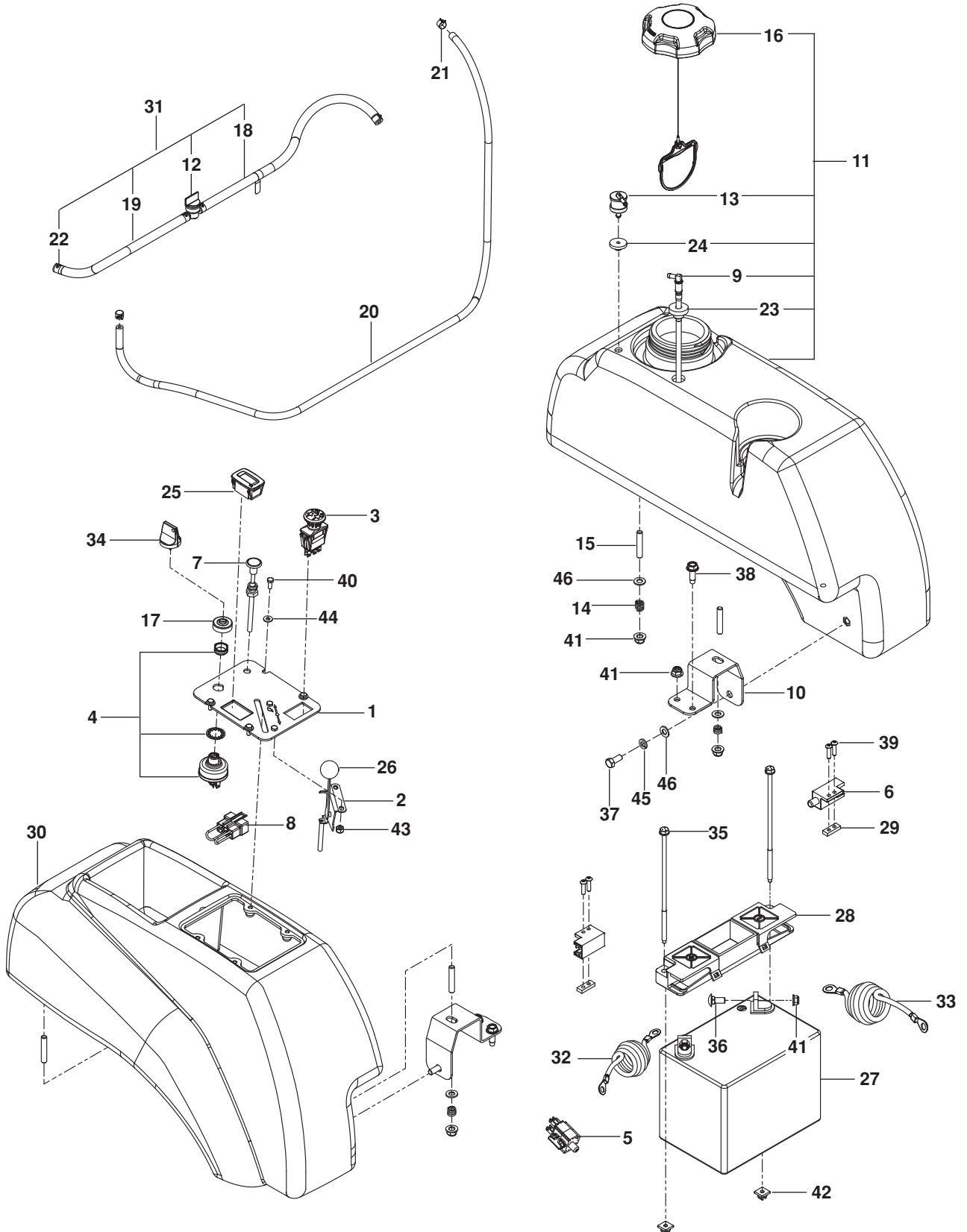
STEERING



STEERING

ITEM	PART NO.	QTY.	DESCRIPTION	ITEM	PART NO.	QTY.	DESCRIPTION
1..	539 13 20-09.....	1	LEVER w/ GRIP RT	15..	539 11 66-90.....	2	ROD END LT
2..	539 13 20-10.....	1	LEVER w/ GRIP LT	16..	874 78 05-20.....	6	BOLT $\frac{5}{16}$ -18 x 1 $\frac{1}{4}$ HEX HD
3..	539 13 08-94.....	2	GRIP, FOAM	17..	874 78 08 44.....	2	BOLT $\frac{1}{2}$ -13 x 2 $\frac{3}{4}$ HEX HD
4..	577 25 17-01.....	2	BRACKET, CONTROL	18..	539 97 69-35.....	4	BOLT $\frac{5}{16}$ -18 x 1 $\frac{1}{2}$ HEX HD
5..	532 43 82-82.....	4	BEARING	19..	576 85 04-02.....	2	SCREW $\frac{5}{16}$ -18 X 1 $\frac{3}{4}$ BTN HD
6..	587 18 77 01.....	2	LEVER, CONTROL	20..	874 49 05 12.....	8	BOLT $\frac{5}{16}$ -18 X $\frac{3}{4}$ HEX FLG HD
7..	577 42 00-01.....	2	LEVER, HANDLE	21..	525 54 40-01.....	4	BOLT $\frac{5}{16}$ -18 x 1 $\frac{1}{4}$ HEX FLG HD
8..	584 92 72-01.....	2	SPACER, PIVOT CONTROL	22..	539 99 02-23.....	4	NUT $\frac{5}{16}$ -24 HEX
9..	539 10 27-20.....	2	DAMPENER	23..	539 10 80-10.....	2	NUT $\frac{1}{2}$ -13 HEX JAM NYL GR2
10..	577 25 18-01	2	BLOCK, TRACKING	24..	539 99 10-73.....	2	NUT $\frac{5}{16}$ -24 HEX JAM LH
11..	539 10 28-45.....	2	SPRING	25..	539 11 28-99.....	10	NUT $\frac{5}{16}$ -18 HEX FLG NYLOC
12..	574 81 14-01.....	2	ROD, MOTION CONTROL	26..	539 99 07-17.....	6	NUT $\frac{5}{16}$ -18 HEX NYLOC
13..	539 11 66-89.....	2	COUPLER, ROD END	27..	539 99 05-85.....	4	NUT $\frac{5}{16}$ -18 HEX WHIZLK
14..	539 11 57-29.....	2	ROD END RT	28..	819 11 11-16.....	12	WASHER $\frac{5}{16}$ SAE FLT

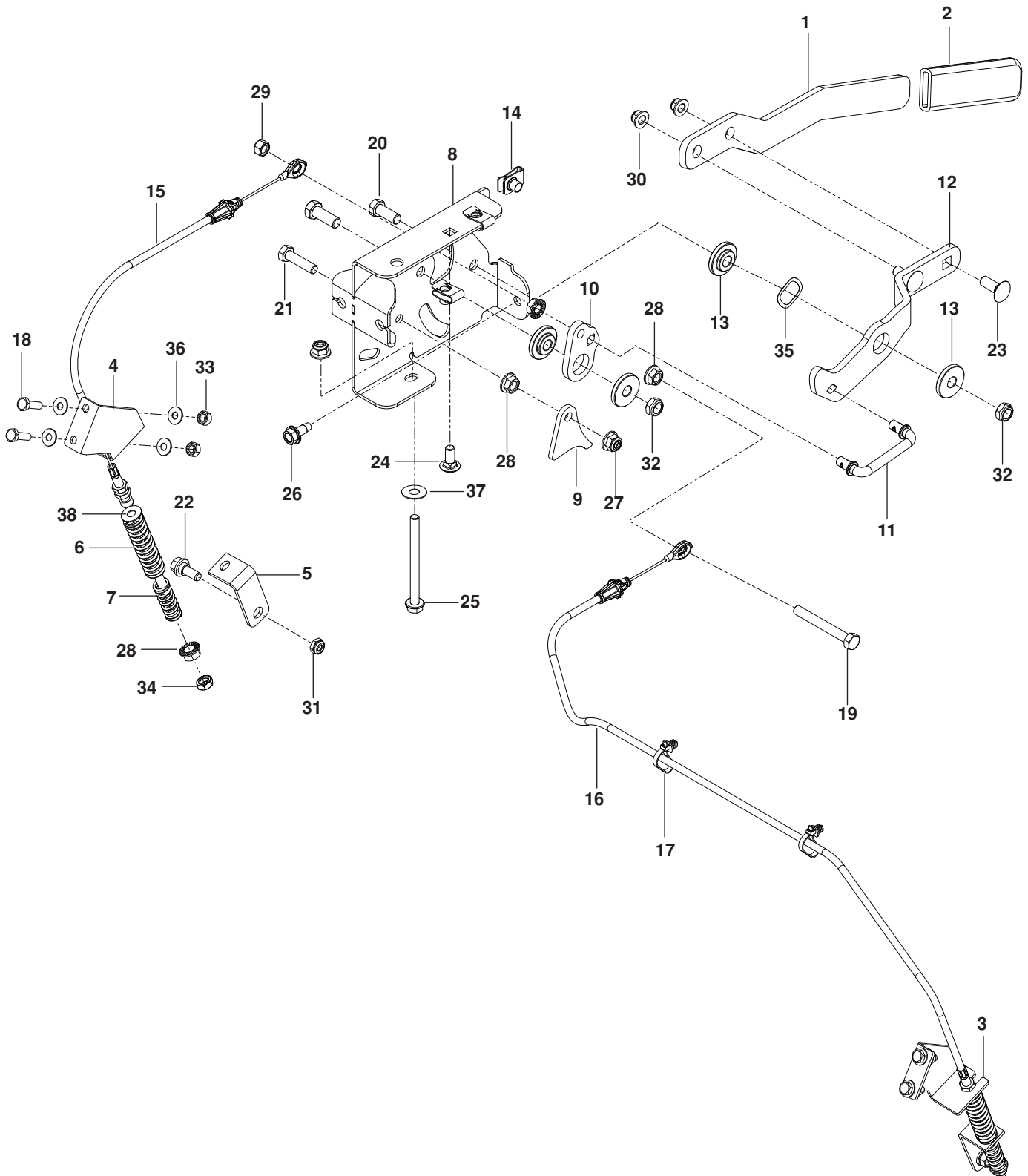
IGNITION



IGNITION

ITEM	PART NO.	QTY.	DESCRIPTION	ITEM	PART NO.	QTY.	DESCRIPTION
1..	574 84 12-04.....	1	PLATE, CONSOLE, BLK	25..	586 16 18-01.....	1	METER, SERVICE
2..	539 10 27-32.....	1	CABLE, THROTTLE	26..	539 13 30-49.....	1	KNOB
3..	539 13 16-27.....	1	SWITCH, PTO 10 AMP	27..	539 10 24-36.....	1	BATTERY
4..	574 45 54-01.....	1	SWITCH, IGNITION	28..	539 10 76-28.....	1	BATTERY HOLD DOWN
5..	539 11 37-92.....	1	SWITCH, BRAKE	29..	539 10 26-78.....	2	PLATE, TAPPED
6..	532 10 95-53.....	2	SWITCH, INTERLOCK	30..	576 68 37-01.....	1	CONSOLE, RT BLK
7..	584 97 18-01.....	1	CHOKE CONTROL	31..	576 54 78-01.....	1	ASSY, FUEL LINE
8..	575 32 10-01.....	1	PLUG, TIMER	32..	539 10 49-74.....	1	CABLE, POSITIVE 31"
9..	576 46 92-01.....	1	FITTING, FUEL	33..	539 10 76-45.....	1	CABLE, NEGATIVE 32"
10..	539 13 16-71.....	2	SUPPORT, TANK, BLK	34..	574 45 55-01.....	1	KEY, IGNITION
11..	585 72 23-02.....	1	TANK ASSY LT BLK	35..	539 10 76-32.....	2	BOLT 1/4 x 7 1/2
12..	539 91 63-25.....	1	VALVE, FUEL	36..	539 99 03-16.....	2	BOLT 5/16-18 x 3/4 RD HD SQNK
13..	576 61 81-01.....	1	VALVE, FUEL CHECK	37..	874 78 05-12.....	2	BOLT 5/16-18 x 3/4 HEX HD
14..	539 10 28-45.....	6	SPRING	38..	817 49 05-16.....	3	SCREW 5/16-18 x 1 THD FRM
15..	539 10 25-02.....	6	STUD 5/16-18	39..	574 82 27-01.....	4	SCREW #10-24 x 3/4 SKT HD
16..	575 01 81-01.....	1	FUEL CAP w /TETHER	40..	539 99 04-11.....	6	SCREW #10-24 x 1/2 SLT
17..	539 10 31-78.....	1	CAP, IGNITION SWITCH NUT	41..	539 11 28-99.....	12	NUT 5/16-18 HEX FLG NYLOC
18..	587 04 48-26.....	1	HOSE, FUEL 26"	42..	539 10 76-29.....	2	NUT 1/4 PUSH NYLON
19..	587 04 48 10.....	1	HOSE, FUEL 10"	43..	539 97 69-77.....	2	NUT #10-24 NYLOC
20..	587 04 45-59.....	1	HOSE 3/16 VAPOR 59"	44..	819 07 08-18.....	4	WASHER #10
21..	575 43 65-01.....	2	CLAMP, HOSE	45..	810 03 05-00.....	2	WASHER 5/16 SLW
22..	539 91 22-22.....	4	CLAMP, HOSE	46..	819 11 11-16.....	8	WASHER 5/16 SAE
23..	539 10 52-45.....	1	GROMMET, RUBBER	NOT SHOWN			
24..	576 61 82-01.....	1	GROMMET, CHECK VALVE		585 99 97-01	1	HARNES, MAIN

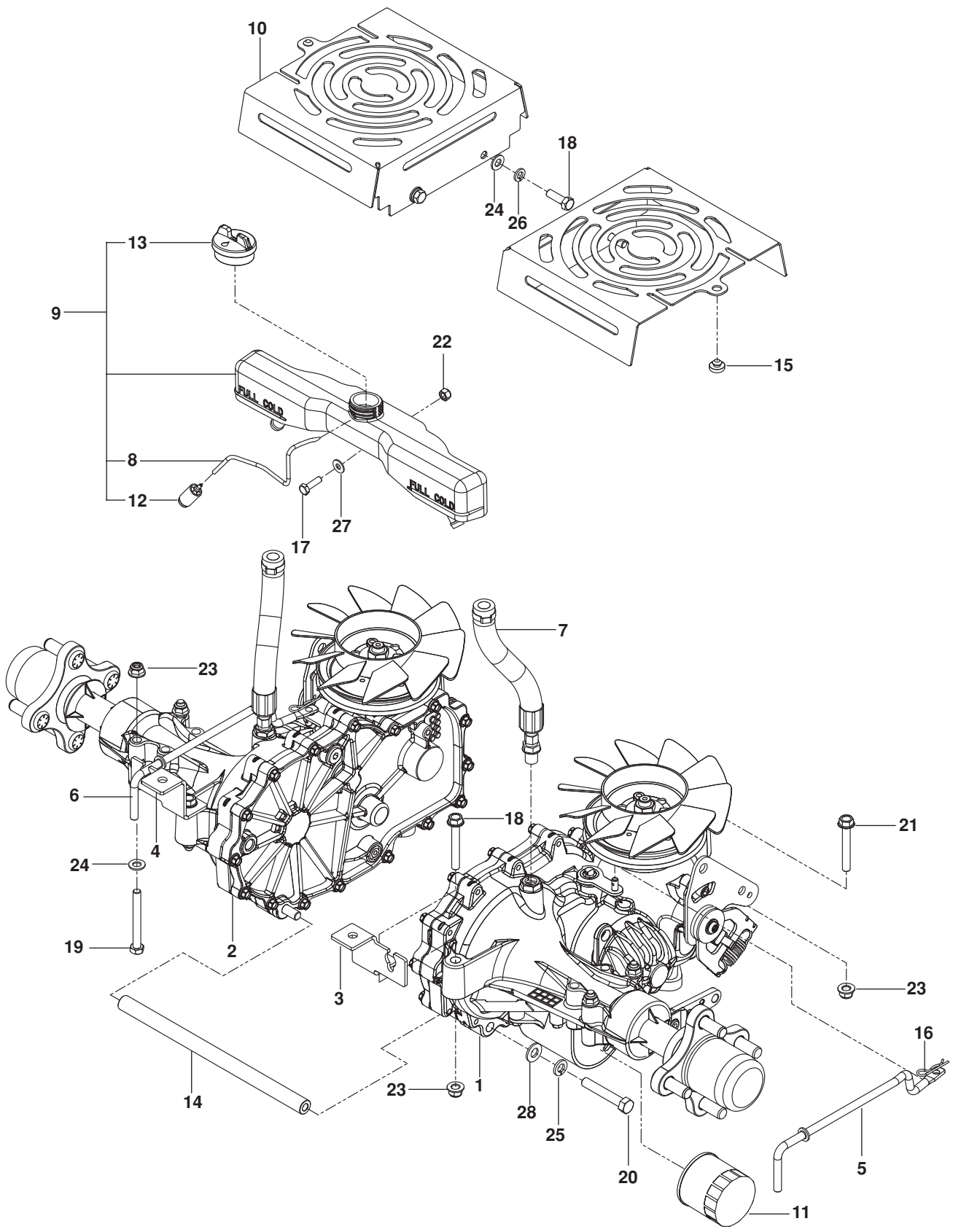
PARK BRAKE



PARK BRAKE

ITEM	PART NO.	QTY.	DESCRIPTION	ITEM	PART NO.	QTY.	DESCRIPTION
1..	575 01 75-02.....	1	ARM, BRAKE	20..	539 99 05-63.....	2	BOLT 3/8-16 x 1 HEX HD
2..	539 10 50-36.....	1	GRIP, BRAKE HANDLE	21..	539 99 02-09.....	1	BOLT 5/16-18 x 1 HEX HD
3..	575 22 96-02.....	1	BRACKET, RT BLK	22..	539 11 03-03.....	2	BOLT 5/16 SHOULDER
4..	575 22 97-02.....	1	BRACKET, LT BLK	23..	539 99 06-45.....	2	BOLT 3/8-16 x 1 RD HD SQNK
5..	575 22 98-02.....	2	BRACKET, BRAKE	24..	539 99 03-16.....	1	BOLT 5/16-18 x 3/4 RD HD SQNK
6..	575 23 02-01.....	2	SPRING, RETURN	25..	539 13 17-80.....	1	BOLT 5/16-18 x 3 3/4 HEX FLG HD
7..	575 23 03-01.....	2	SPRING, ENGAGEMENT	26..	874 49 05-12.....	1	BOLT 5/16-18 x 3/4 THD FRM
8..	539 13 21-58.....	1	MOUNT, BRAKE	27..	539 11 28-99.....	2	NUT 5/16-18 FLANGE NYLOC
9..	539 13 21-54.....	1	ACTUATOR, SWITCH	28..	539 99 05-85.....	5	NUT 5/16-18 HEX WHIZLK
10..	539 13 21-53.....	1	BELLCRANK, BRAKE	29..	539 99 07-17.....	1	NUT 5/16-18 HEX NYLOC
11..	539 13 24-24.....	1	LINKAGE, BRAKE	30..	521 99 65-01.....	2	NUT 3/8-16 HEX FLANGE NYL
12..	539 13 24-23.....	1	LEVER, BRAKE	31..	539 11 56-17.....	2	NUT 5/16 HEX NYLOC
13..	539 13 21-61.....	4	BUSHING, BRAKE	32..	539 20 02-82.....	2	NUT 3/8-16 HEX JAM NYLOC
14..	539 10 47-63.....	3	RETAINER, U TYPE	33..	539 97 69-78.....	4	NUT 1/4-20 HEX NYLOC
15..	539 13 21-73.....	1	CABLE, BRAKE SHORT	34..	539 10 78-97.....	2	NUT 5/16-18 HEX JAM
16..	539 13 21-74.....	2	CABLE, BRAKE LONG	35..	539 13 30-07.....	1	WASHER .825 WAVE
17..	505 28 00-01.....	2	TIE w/ CLIP	36..	539 99 00-55.....	8	WASHER 1/4 SAE FLT
18..	539 99 06-43.....	4	BOLT 1/4-20 x 7/8 HEX HD	37..	539 10 95-54.....	2	WASHER 1/2 FLT
19..	539 10 83-96.....	1	BOLT 5/16-18 x 2 1/2 HEX HD TPBLT	38..	539 99 01-22.....	2	WASHER 5/16 SAE FLT

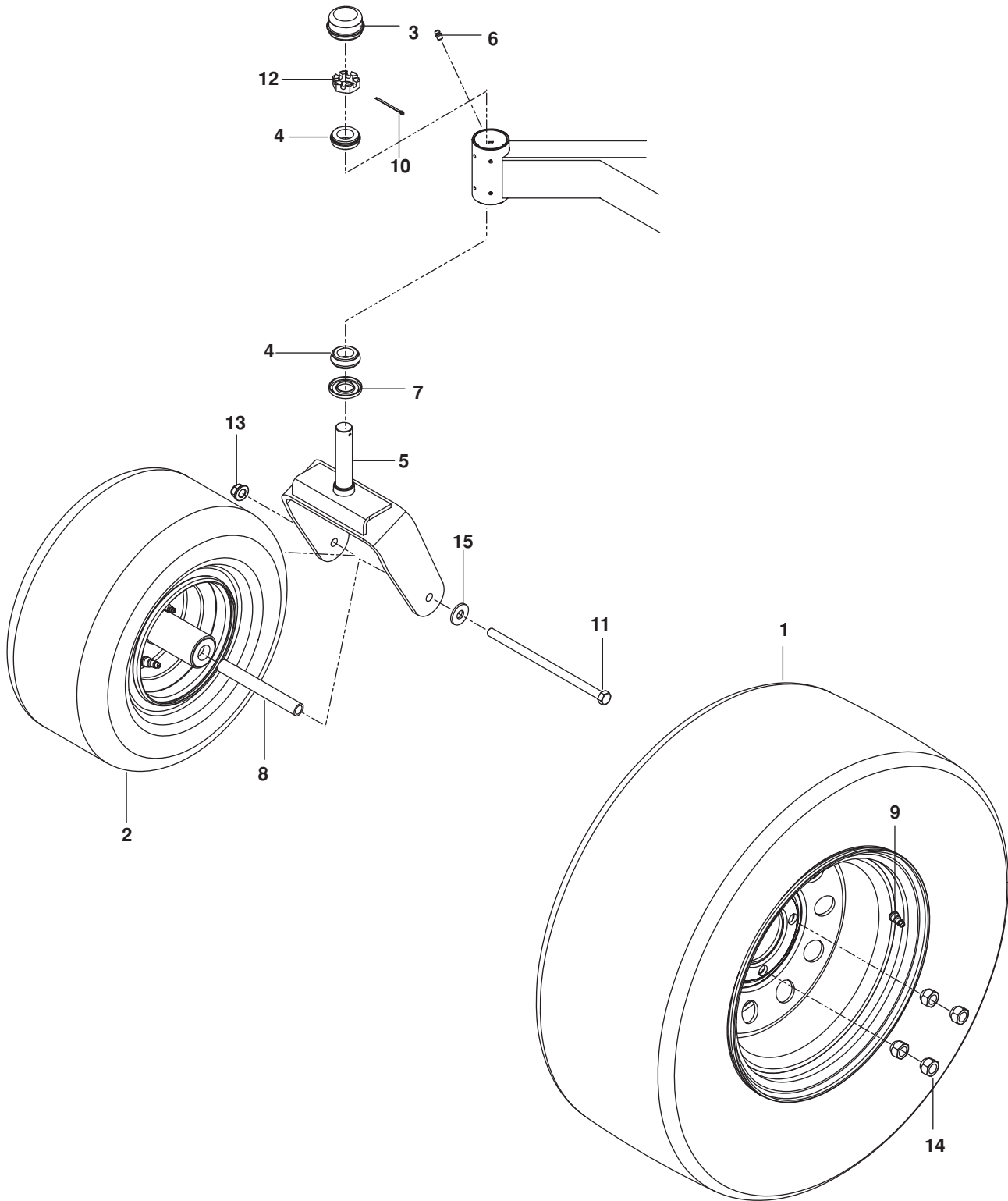
HYDRAULIC PUMP-MOTOR



HYDRAULIC PUMP-MOTOR

ITEM	PART NO.	QTY.	DESCRIPTION	ITEM	PART NO.	QTY.	DESCRIPTION
1..	577 22 77-02.....	1	TRANS, ZT-3100, LT	15..	539 10 25-87.....	2	GROMMET, BUMPER
2..	577 22 77-01.....	1	TRANS, ZT-3100, RT	16..	539 97 69-88.....	2	HAIRPIN COTTER
3..	575 01 71-02.....	1	BRACKET, TRANS, LT	17..	539 99 06-43.....	1	BOLT 1/4-20 x 7/8 HEX HD
4..	575 01 70-02.....	1	BRACKET, TRANS, RT	18..	539 99 02-09.....	4	BOLT 5/16-18 x 1 HEX HD
5..	539 13 16-16.....	1	LINKAGE, BYPASS LT	19..	539 10 17-21.....	4	BOLT 5/16-18 x 2 3/4 HEX HD
6..	539 13 16-18.....	1	LINKAGE, BYPASS RT	20..	539 10 85-51.....	2	BOLT 3/8-16 x 2 1/2 HEX HD GR8
7..	574 89 21-01.....	2	HOSE, EXPANSION	21..	574 23 38-01.....	4	BOLT 5/16-18 x 2 1/4 HEX FLG HD
8..	586 06 75-01.....	1	HOSE, FUEL	22..	539 97 69-78.....	1	NUT 1/4-20 HEX NYLOC
9..	585 31 82-01.....	1	TANK, EXPANSION	23..	539 11 28-99.....	8	NUT 5/16-18 HEX FLG NYLOC
10..	584 99 42-02.....	2	COVER, FAN	24..	819 11 11-16.....	8	WASHER 5/16 SAE FLT
11..	539 11 34-66.....	2	FILTER, HYDRO	25..	539 99 01-18.....	2	WASHER 3/8 SPLT LK
12..	530 09 56-46.....	1	FILTER	26..	539 99 01-87.....	4	WASHER 5/16 SLW
13..	586 07 27-01.....	1	CAP, TANK	27..	539 99 00-55.....	1	WASHER 1/4 SAE FLT
14..	574 86 85-01.....	1	TUBE 10 3/8" SPACER	28..	539 99 01-22.....	2	WASHER 3/8 SAE FLT

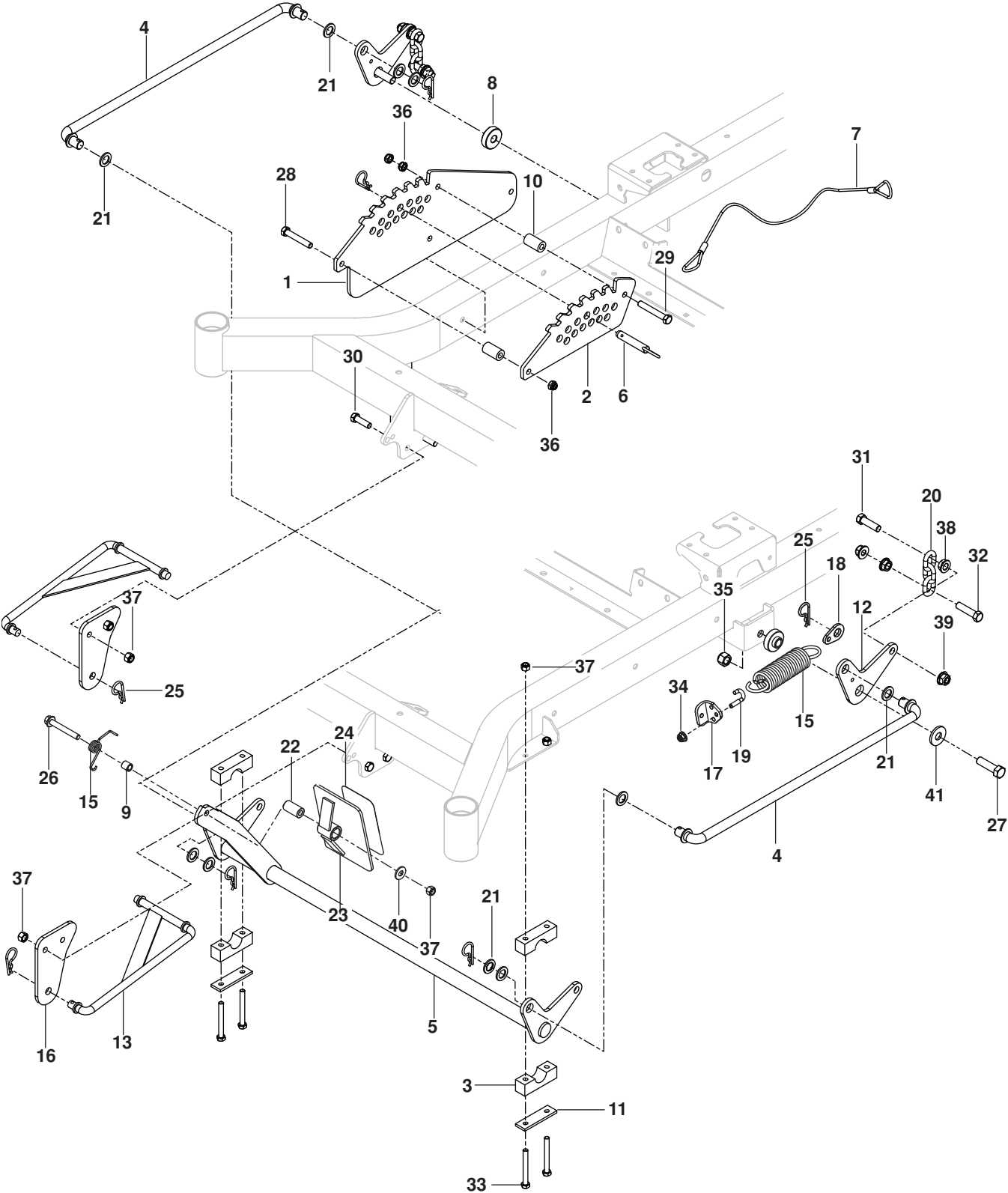
WHEELS



WHEELS

ITEM	PART NO.	QTY.	DESCRIPTION	ITEM	PART NO.	QTY.	DESCRIPTION
1..	580 74 70-01.....	2.....	WHEEL ASSY 22 x 10-10	9..	539 91 22-34.....	2.....	AIR VALVE
2..	581 19 95-01.....	2.....	WHEEL ASSY 13 x 6.5	10..	539 10 28-89.....	2.....	COTTER PIN 1/8 x 2
3..	539 10 25-35.....	2.....	CAP, GREASE	11..	539 10 55-17.....	2.....	BOLT 1/2-13 x 9 1/2 HEX HD
4..	539 10 25-43.....	4.....	BEARING, ROLLER TAPERED	12..	539 10 28-52.....	2.....	NUT 1"-14 SLOTTED JAM
5..	575 32 92-06.....	2.....	YOKE, CASTER, RED	13..	521 99 11-01	2.....	NUT 1/2-13 HEX FLG NYLOC
6..	539 10 14-74.....	2.....	ZERK	14..	539 10 11-73.....	8.....	NUT 1/2-20 LUG
7..	539 10 28-51.....	2.....	SEAL	15..	539 10 95-54.....	2.....	WASHER 1/2 FLT
8..	575 33 49-01.....	2.....	SPACER, PIVOT				

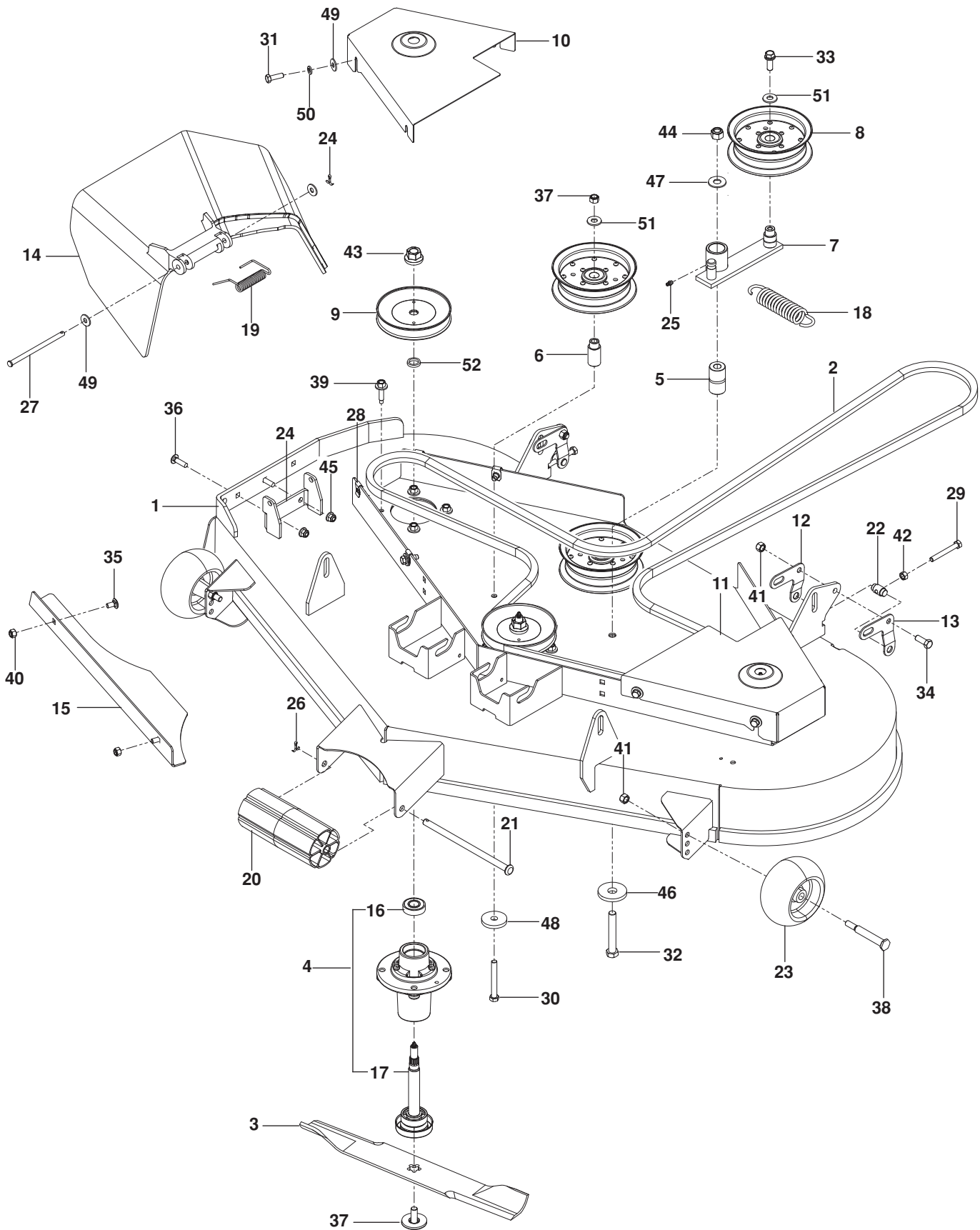
MOWER LIFT / DECK LIFT



MOWER LIFT / DECK LIFT

ITEM	PART NO.	QTY.	DESCRIPTION	ITEM	PART NO.	QTY.	DESCRIPTION
1..	539 13 30-04.....	1	PLATE, HEIGHT, MAIN	22..	539 10 18-36.....	1	BUSHING, SLEEVE
2..	539 13 28-99.....	1	PLATE, HEIGHT	23..	539 11 42-80.....	1	PEDAL, FOOT
3..	539 10 48-08.....	4	PILLOW BLOCK	24..	539 12 13-22.....	1	PAD, FOOT
4..	539 11 08-08.....	2	LINK, LIFT	25..	539 11 55-01.....	7	COTTER PIN
5..	584 41 26-01.....	1	SHAFT, LIFT	26..	874 49 06-44.....	1	BOLT 3/8-16 x 2 3/4 HEX FLG HD
6..	539 10 25-26.....	1	PIN, LIFT	27..	539 10 81-81.....	2	BOLT 1/2-13 x 1 3/4 HEX HD GR 8
7..	539 10 50-59.....	1	LANYARD	28..	539 99 06-29.....	1	BOLT 3/8-16 x 2 1/4
8..	586 70 17-01.....	2	SPACER, IDLER	29..	539 99 06-37.....	1	BOLT 3/8-16 x 2 1/2
9..	539 13 28-52.....	1	SPACER	30..	539 99 05 63.....	4	BOLT 3/8-16 x 1
10..	539 10 45-30.....	2	SPACER	31..	539 10 11-75.....	4	BOLT 7/16-14 x 1 1/2
11..	584 39 27-02.....	2	BAR, REINFORCEMENT	32..	539 10 80-73.....	4	BOLT 7/16-14 x 1 3/4
12..	539 13 23-78.....	2	BELLCRANK, REAR	33..	539 10 17-21.....	4	BOLT 5/16-18 x 2 3/4
13..	539 11 22-23.....	2	LINKAGE, STRUT	34..	539 11 28-99.....	6	NUT 5/16-18 FLG NYLOC
14..	539 13 28-50.....	1	SPRING, TORSION	35..	539 10 13-31.....	2	NUT 1/2 HEX NYLOC
15..	539 10 26-42.....	1	SPRING	36..	539 20 02-82.....	3	NUT 3/8-16 HEX JAM NYLOC
16..	539 13 20-17.....	2	BRACKET, STRUT	37..	539 97 69-79.....	5	NUT 3/8-16 HEX NYLOC
17..	539 13 17-91.....	1	MOUNT, SPRING	38..	539 10 25-82.....	8	NUT 7/16-14 HEX WHIZ LK
18..	539 13 17-92.....	1	TAB, SPRING	39..	539 13 20-19.....	8	NUT 7/16-14 HEX WHIZ LK SP
19..	539 11 28-96.....	1	J-BOLT	40..	539 99 05-17.....	1	WASHER 3/8 FLT
20..	539 10 96-93.....	4	LIFT CHAIN, 3 LINK	41..	539 10 95-54.....	2	WASHER 1/2 FLT
21..	539 99 10-43.....	10	BUSHING, .625				

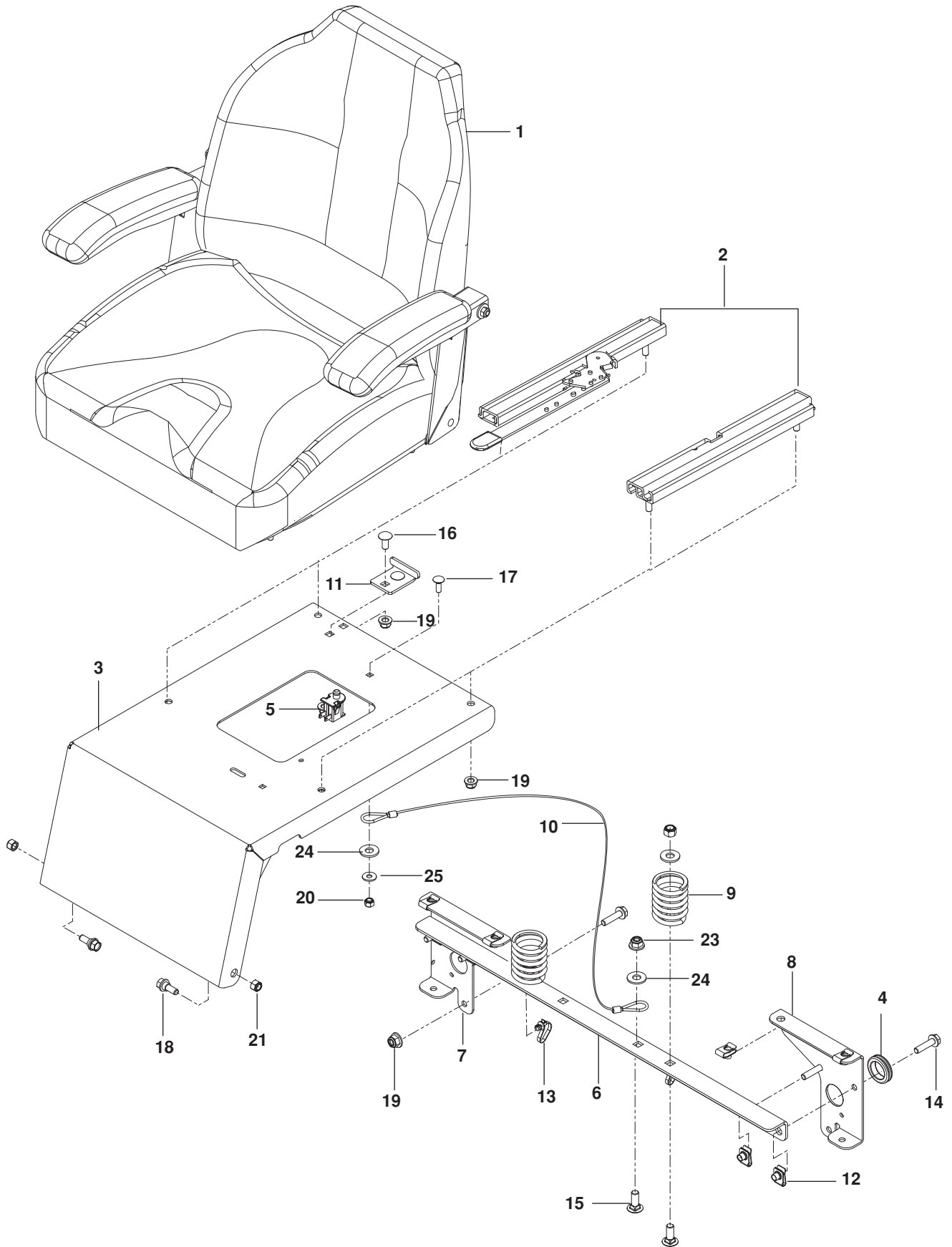
MOWER DECK / CUTTING DECK



MOWER DECK / CUTTING DECK

ITEM	PART NO.	QTY.	DESCRIPTION	ITEM	PART NO.	QTY.	DESCRIPTION
1..	581 29 79-04.....	1	DECK	27..	539 11 07-36.....	1	PIN, CLEVIS ⁵ / ₁₆
2..	539 10 70-95.....	1	BELT, DECK	28..	539 10 47-63.....	8	RETAINER, U TYPE ⁵ / ₁₆ -18
3..	539 11 20-79.....	3	BLADE, 18"	29..	539 10 83-96.....	2	BOLT ⁵ / ₁₆ -18 x 2 ¹ / ₂ TPBLT
4..	539 11 21-70.....	3	HOUSING ASSEMBLY	30..	874 78 06-48.....	2	BOLT ³ / ₈ -16 x 3 HEX HD
5..	539 10 34-27.....	1	BUSHING, PIVOT	31..	874 78 05-16.....	8	BOLT ⁵ / ₁₆ -18 x 1 HEX HD
6..	539 11 21-69.....	2	BUSHING, IDLER	32..	539 10 34-33.....	1	BOLT ¹ / ₂ -13 x 3 ¹ / ₄ HEX HD
7..	539 11 21-98.....	1	ARM, IDLER	33..	539 99 05-82.....	1	BOLT ³ / ₈ -16 x 1 WHIZLK
8..	539 13 27-28.....	3	PULLEY, IDLER	34..	539 99 05-63.....	2	BOLT ³ / ₈ -16 x 1 HEX HD
9..	532 17 34-36.....	3	PULLEY	35..	872 11 05-05.....	3	BOLT ⁵ / ₁₆ -18 x ⁵ / ₈ HEX FLG HD
10..	577 26 03-02.....	1	BELT SHIELD, RT RED	36..	872 11 05-08.....	2	BOLT ⁵ / ₁₆ -18 x 1 HEX FLG HD
11..	577 26 04-02.....	1	BELT SHIELD, LT RED	37..	539 10 75-22.....	3	BOLT ⁷ / ₁₆ BLADE
12..	584 85 94-02.....	2	PITCH, ADJUST, RT	38..	532 13 76-44.....	2	BOLT, SHOULDER
13..	584 85 94-04.....	2	PITCH, ADJUST, LT	39..	584 95 39-01.....	12	SCREW ⁵ / ₁₆ -18 WSH HD
14..	539 11 07-33.....	1	CHUTE, DISCHARGE	40..	873 80 05-00.....	3	NUT ⁵ / ₁₆ -18 HEX NYLOC
15..	539 11 24-17.....	1	PLATE, CONFINEMENT	41..	539 97 69-79.....	6	NUT ³ / ₈ -16 HEX NYLOC
16..	532 11 04-85.....	3	BEARING, BALL	42..	539 99 01-96.....	2	NUT ⁵ / ₁₆ -18 HEX
17..	532 18 72 91.....	3	SHAFT	43..	539 10 75-90.....	3	NUT ⁹ / ₁₆ TOP CENTER LOCK
18..	539 10 32-56.....	1	SPRING	44..	539 10 13-31.....	1	NUT ¹ / ₂ HEX NYLOC
19..	539 11 07-35.....	1	SPRING, TORSION	45..	539 11 28-99.....	2	NUT ⁵ / ₁₆ -18 HEX FLG NYLOC
20..	532 17 60-66.....	1	ROLLER, NOSE	46..	539 10 22-43.....	1	WASHER, SUPPORT
21..	532 17 91-27.....	1	ROD, ROLLER, NOSE	47..	539 99 05-50.....	1	WASHER ¹ / ₂ STD FLT
22..	539 13 18-59.....	1	TRUNION, PITCH	48..	539 10 65-04.....	2	WASHER, HEAVY
23..	539 10 76-10.....	2	WHEEL, GAUGE	49..	819 12 14-14.....	10	WASHER ⁵ / ₁₆ STD FLT
24..	581 60 60-04.....	1	BRACKET RED	50..	810 03 05-00.....	8	WASHER ⁵ / ₁₆ SLW
25..	539 97 69-98.....	1	ZERK	51..	819 14 16-14.....	3	WASHER ³ / ₈ STD FLT
26..	539 99 03-65.....	2	PIN, COTTER ¹ / ₈ x ³ / ₄	52..	539 10 75-20.....	3	WASHER-SPACER

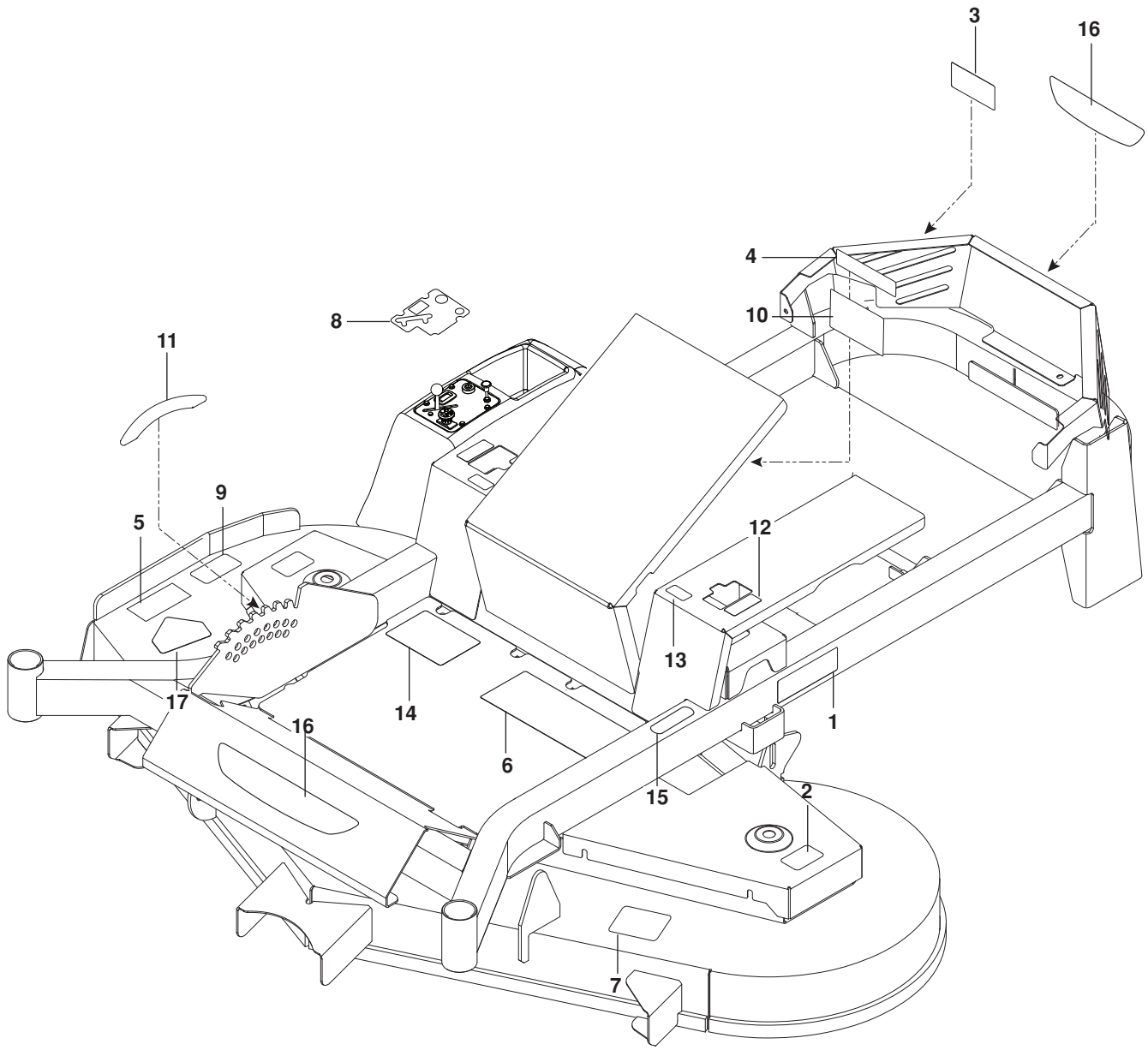
SEAT



SEAT

ITEM	PART NO.	QTY.	DESCRIPTION	ITEM	PART NO.	QTY.	DESCRIPTION
1..	586 18 84-01.....	1.....	SEAT	14..	525 54 40-01.....	4.....	BOLT ⁵ / ₁₆ -18 x 1 ¹ / ₄ HEX FLG HD
2..	539 11 20-37.....	1.....	RAIL SET, SEAT	15..	539 99 06-45.....	3.....	BOLT ³ / ₈ -16 x 1 RD HD SQNK
3..	574 84 61-04.....	1.....	MOUNT	16..	539 10 91-00.....	2.....	BOLT ⁵ / ₁₆ -18 x ³ / ₄ RD HD SQNK
4..	539 10 59-74.....	1.....	GROMMET RUBBER	17..	539 99 00-74.....	1.....	BOLT ¹ / ₄ -40 x ³ / ₄ RD HD SQNK
5..	532 42 10-62.....	1.....	SWITCH, SEAT	18..	539 13 08-96.....	2.....	BOLT ⁵ / ₁₆ -18 HEX SHOULDER
6..	539 13 16-56.....	1.....	SUPPORT, SEAT BLK	19..	539 11 28-99.....	8.....	NUT ⁵ / ₁₆ -18 HEX FLG NYLOC
7..	584 99 01-02.....	1.....	SUPPORT, RT	20..	539 97 69-78.....	1.....	NUT ¹ / ₄ -20 HEX NYLOC
8..	584 99 02-02.....	1.....	SUPPORT, LT	21..	539 99 07-17.....	2.....	NUT ⁵ / ₁₆ -18 HEX NYLOC
9..	539 11 03-00.....	2.....	SPRING, SEAT	22..	539 97 69-79.....	2.....	NUT ³ / ₈ -16 HEX NYLOC
10..	539 10 32-47.....	1.....	LANYARD, SEAT	23..	521 99 65-01.....	1.....	NUT ³ / ₈ -16 FLG HEX NYLOC
11..	539 13 07-93.....	1.....	SEAT STOP	24..	539 99 05-17.....	4.....	WASHER ³ / ₈ STD FLT
12..	539 10 47-63.....	8.....	RETAINER, U TYPE	25..	539 99 05-98.....	1.....	WASHER ¹ / ₄ FLT
13..	505 28 00-01.....	2.....	TIE WRAP w/ CLIP				

DECALS

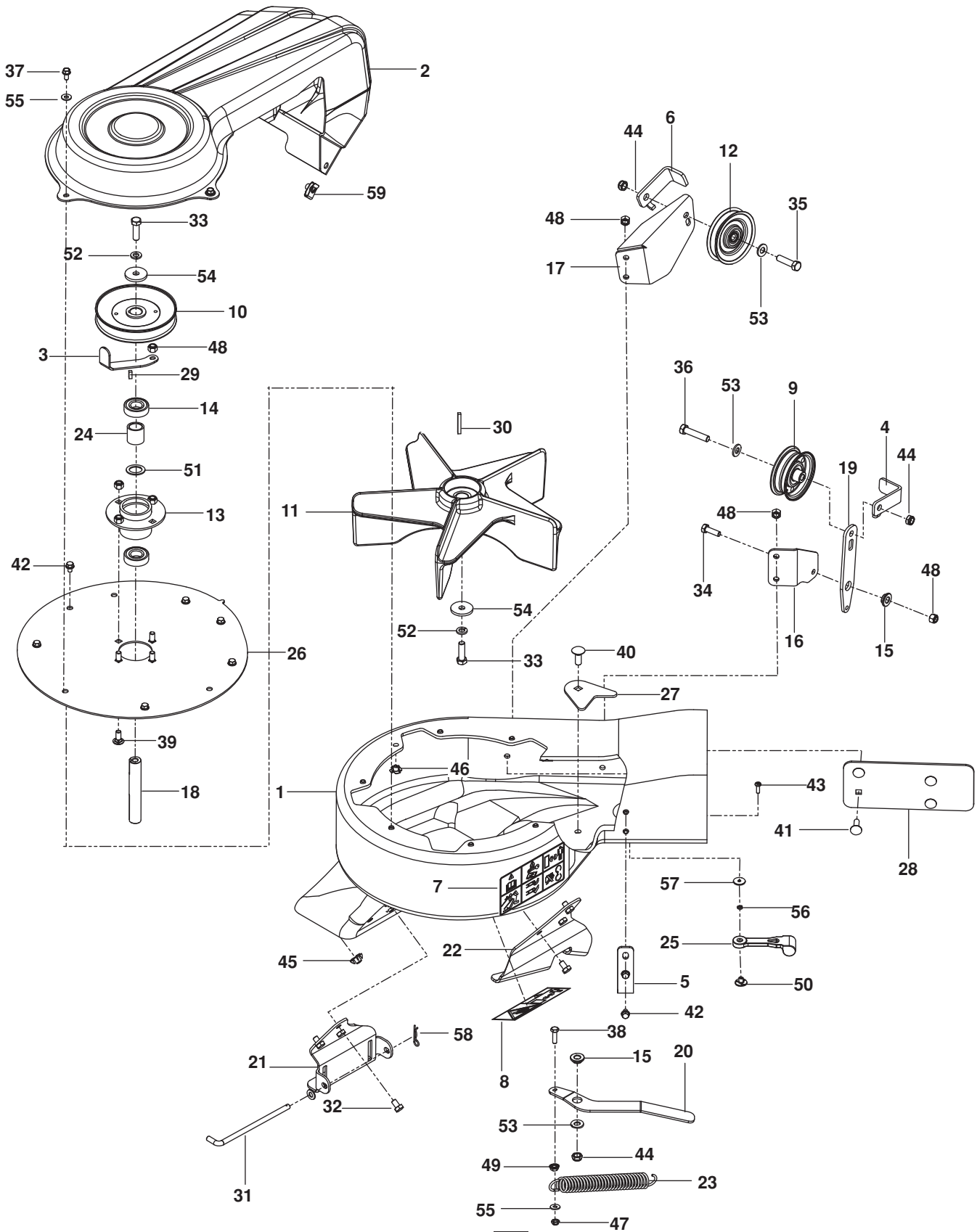


DECALS

ITEM	PART NO.	QTY.	DESCRIPTION	ITEM	PART NO.	QTY.	DESCRIPTION
1..	587 46 23-01.....	1DECAL, Z52XF	10..	539 13 21-87	1DECAL, SERVICE
2..	581 72 43-01	2DECAL, NO STEP	11..	587 45 75-01	1DECAL, HEIGHT ADJUST
3..	539 10 57-44	1DECAL, DANGER BLT DRIVE	12..	587 45 72-01.....	2DECAL, MOTION CONTROL
4..	539 10 57-45	1DECAL, BATTERY WARNING	13..	586 45 71-01	2DECAL, TRACKING
5..	539 10 57-46	1DECAL, SEVERING	14..	586 49 41-01	2DECAL, START
6..	539 10 79-59	1DECAL, WARNING GRAPHICS	15..	587 45 73-01.....	1DECAL, PARK BRAKE
7..	539 11 26-20	1DECAL, BELT ROUTING	16..	587 46 94-01.....	2DECAL, BRAND
8..	587 45 74-01.....	1DECAL, CONSOLE	17..	584 49 04-60.....	1DECAL, DEFLECTOR
9..	581 72 44-01	1DECAL, DEFLECTOR				

ACCESSORIES

Blower

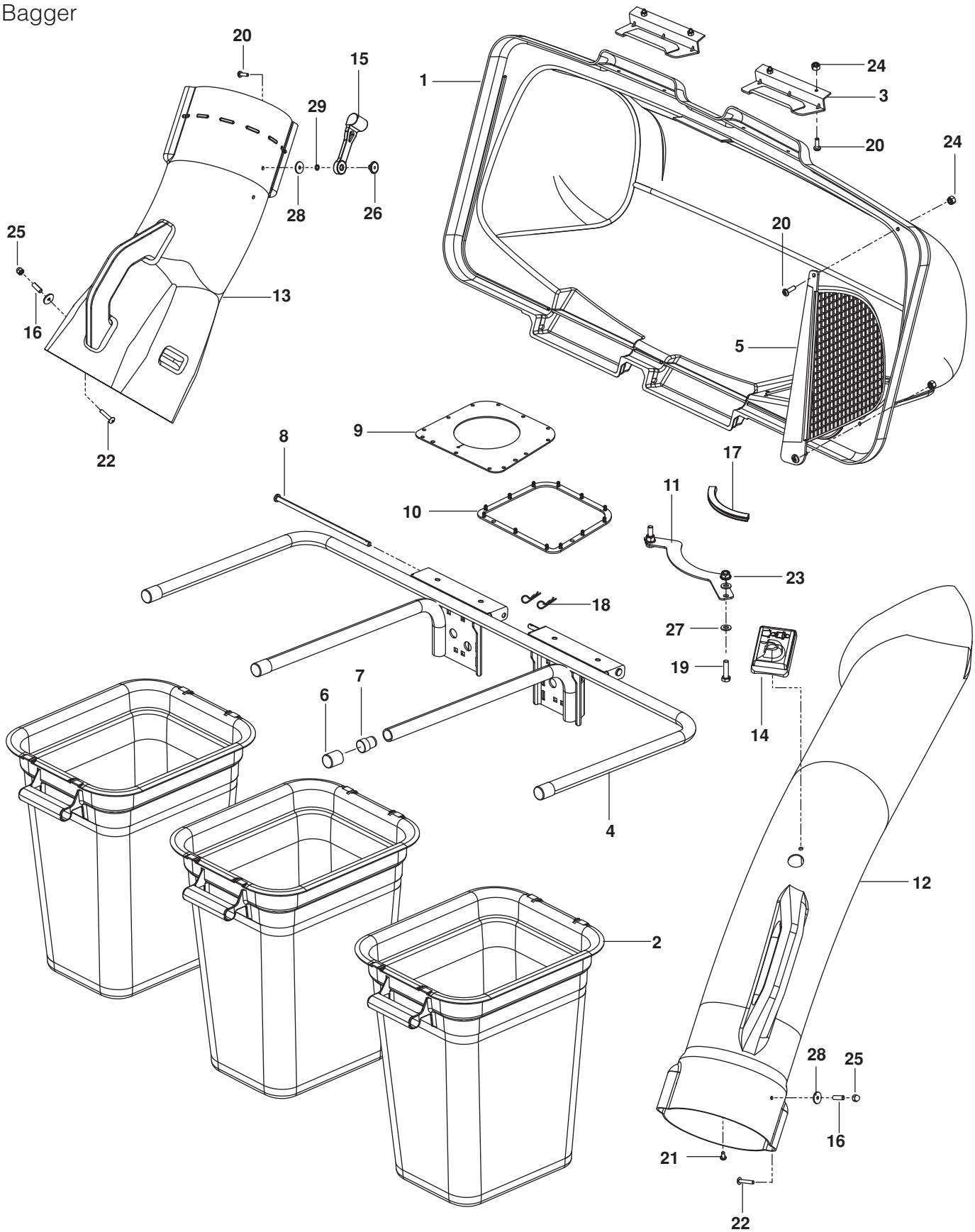


ACCESSORIES

ITEM	PART NO.	QTY.	DESCRIPTION	ITEM	PART NO.	QTY.	DESCRIPTION
1..	539 13 03-44.....	1	HOUSING w/DECALS	31..	539 13 03-17.....	1	PIN
2..	539 13 02-93.....	1	COVER, BELT	32..	874 78 05-08.....	6	BOLT $\frac{5}{16}$ -18 x $\frac{1}{2}$
3..	539 13 10-85.....	1	KEEPER, BELT OUTER	33..	532 85 08-57.....	2	BOLT $\frac{3}{8}$ -24 x $1\frac{1}{4}$ GR 8
4..	579 13 76-02.....	2	KEEPER, BELT REAR	34..	874 78 05-16.....	1	BOLT $\frac{5}{16}$ -18 x 1
5..	539 13 03-46.....	1	KEEPER	35..	874 78 06-24.....	1	BOLT $\frac{3}{8}$ -16 x $1\frac{1}{2}$
6..	579 13 77-02.....	1	KEEPER	36..	539 97 69-49.....	1	BOLT $\frac{3}{8}$ -16 x $1\frac{3}{4}$
7..	539 10 57-85.....	1	DECAL, WARNING	37..	817 49 04-08.....	3	BOLT $\frac{1}{4}$ -20 x $\frac{1}{2}$
8..	539 10 67-41.....	1	DECAL, SEVERING	38..	874 78 04-14.....	1	BOLT $\frac{1}{4}$ -20 x $\frac{7}{8}$
9..	579 15 08-02.....	1	PULLEY, IDLER	39..	872 14 05-06.....	4	BOLT $\frac{5}{16}$ -18 x $\frac{3}{4}$ RDHD SQNK
10..	539 13 03-24.....	1	PULLEY	40..	872 14 06-08.....	1	BOLT $\frac{3}{8}$ -16 x 1 RDHD SQNK
11..	539 13 02-92.....	1	IMPELLER	41..	872 14 05-08.....	4	BOLT $\frac{5}{16}$ -18 x 1 RDHD SQNK
12..	539 11 36-83.....	1	V-IDLER	42..	539 99 03-02.....	8	SCREW $\frac{1}{4}$ x $\frac{3}{8}$ THD FRM
13..	539 13 02-95.....	1	HUB, BEARING	43..	871 08 10-10.....	1	SCREW #10-24 x $\frac{5}{8}$
14..	539 13 02-96.....	2	BEARING	44..	539 20 02-82.....	3	NUT $\frac{3}{8}$ -16 HEX JAM NYLOC
15..	539 13 03-01.....	2	BUSHING	45..	539 13 03-13.....	6	NUT $\frac{5}{16}$ -18 TEE
16..	579 13 74-02.....	1	MOUNT, IDLER, UPPER	46..	539 13 03-14.....	11	NUT $\frac{1}{4}$ -20 TEE
17..	579 13 75-02.....	1	MOUNT, IDLER, LOWER	47..	539 10 81-20.....	1	NUT $\frac{1}{4}$ -20 HEX NYLOC
18..	539 13 03-16.....	1	SHAFT, IMPELLER	48..	873 80 05-00.....	9	NUT $\frac{5}{16}$ -18 HEX NYLOC
19..	579 13 73-02.....	1	ARM, IDLER	49..	532 43 81-30.....	1	NUT $\frac{1}{4}$ -20 HEX FLANGE
20..	539 13 03-38.....	1	ARM, TENSION	50..	539 10 80-89.....	1	WELD NUT, PLATED
21..	539 13 03-39.....	1	BRACKET, MOUNT, FRONT	51..	539 91 09-35.....	1	WASHER
22..	539 13 03-40.....	1	BRACKET, MOUNT, REAR	52..	810 03 06-00.....	2	WASHER $\frac{3}{8}$ SPLT LOCK
23..	539 10 19-77.....	1	SPRING, TRACTION	53..	819 13 13-16.....	3	WASHER $\frac{3}{8}$ SAE FLT
24..	539 13 03-23.....	1	SPACER	54..	539 11 03-23.....	2	WASHER, HARDENED
25..	532 10 98-08.....	1	LATCH, HOOD	55..	819 09 10-16.....	4	WASHER $\frac{1}{4}$ FLAT SAE
26..	539 13 03-41.....	1	PLATE, OUTER	56..	539 10 95-52.....	2	WASHER $\frac{3}{16}$ LOCK
27..	539 13 21-24.....	1	PLATE, BACKING	57..	539 10 80-84.....	2	WASHER $\frac{3}{16}$ x $\frac{3}{4}$ x 16 GA
28..	539 13 21-22.....	1	PLATE, BACKING	58..	539 97 69-88.....	1	HAIRPIN
29..	539 11 56-67.....	1	KEY $\frac{3}{16}$ x $\frac{1}{2}$	59..	539 10 47-63.....	1	RETAINER U TYPE
30..	539 12 52-29.....	1	KEY $\frac{3}{16}$ x $1\frac{1}{2}$				

ACCESSORIES

Bagger

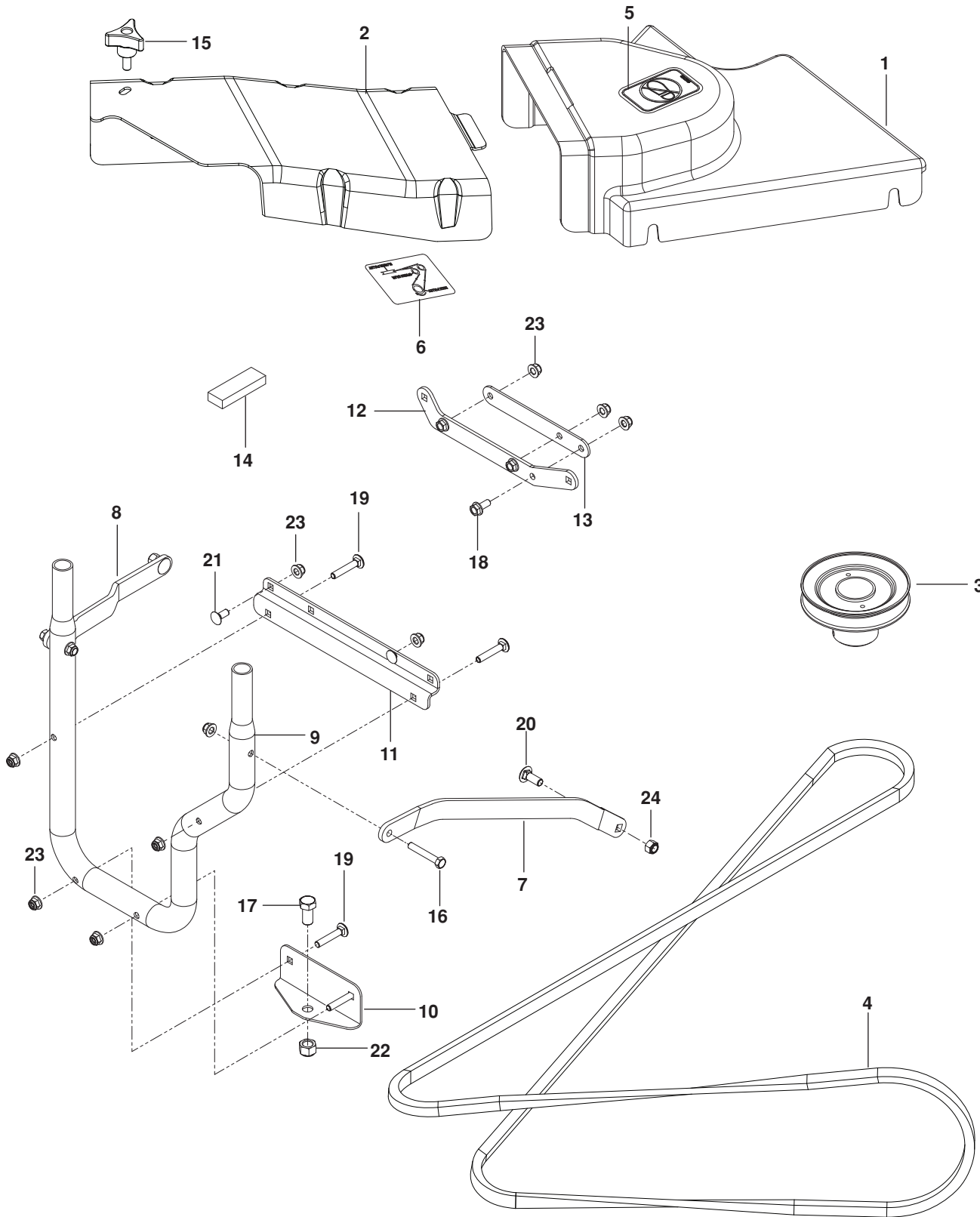


ACCESSORIES

ITEM	PART NO.	QTY.	DESCRIPTION	ITEM	PART NO.	QTY.	DESCRIPTION
1..	532 19 53-73.....	1	COVER	16..	539 10 80-85.....	2	SPACER, SPLIT
2..	532 40 02-26.....	3	CONTAINER, SOFT BAG	17..	539 11 22-94.....	1	FLEX TRIM
3..	532 13 08-95.....	2	HANDLE, BAGGER COVER	18..	539 10 80-96.....	2	HAIR PIN
4..	539 10 80-98.....	1	FRAME, BAGGER	19..	539 99 06-27.....	2	BOLT ⁵ / ₁₆ -18 x 1¼ HEX HD
5..	532 19 27-09.....	1	SCREEN, COVER	20..	539 97 69-52.....	7	SCREW #10-24 x ⁵ / ₈
6..	539 10 80-97.....	4	PLUG, TUBING END	21..	539 10 80-81.....	1	SCREW #10-14 x ½
7..	522 80 13-01.....	2	PLUG, SPACER	22..	539 10 80-83.....	2	SCREW #10-24 x 1½
8..	532 19 27-86.....	2	PIN, HINGE	23..	539 11 28-99.....	2	NUT ⁵ / ₁₆ -18 HEX FLG NYLOC
9..	532 19 25-50.....	1	SEAL, COVER	24..	539 97 69-77.....	6	NUT #10-24 CROWNLOCK
10..	532 19 26-03.....	1	GASKET, COVER	25..	539 10 80-86.....	2	NUT #10-24 ACORN
11..	539 11 02-81.....	1	SUPPORT, CHUTE	26..	539 10 80-89.....	1	WELD NUT, PLATED
12..	539 10 81-41.....	1	CHUTE, UPPER	27..	819 11 11-16.....	4	WASHER ⁵ / ₁₆ SAE
13..	539 13 02-94.....	1	CHUTE, MIDDLE	28..	539 10 80-84.....	3	WASHER ³ / ₁₆ x ³ / ₄ x 16 GA
14..	539 10 80-82.....	1	INDICATOR, BAG DUMP	29..	539 10 95-52.....	2	WASHER ³ / ₁₆ LOCK
15..	539 10 80-88.....	1	LATCH, HOOD				

ACCESSORIES

Guard, Mount and Belt

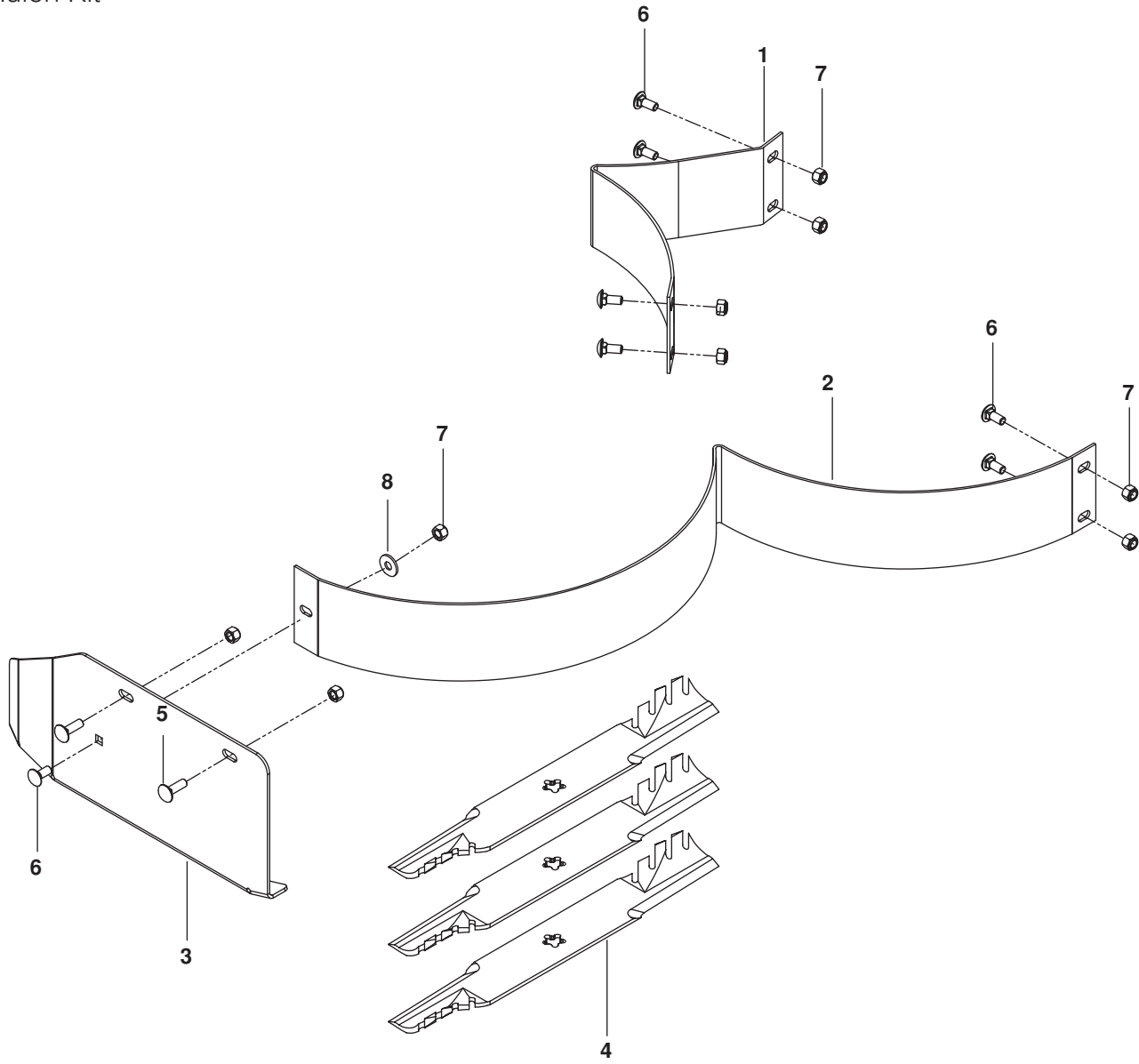


ACCESSORIES

ITEM	PART NO.	QTY.	DESCRIPTION	ITEM	PART NO.	QTY.	DESCRIPTION
1..	539 13 03-07.....	1	SHIELD, BELT, 52"	13..	576 22 15-02.....	1	SPACER PLATE, BLK
2..	53913 03-09.....	1	COVER, BELT	14..	539 11 02-90.....	1	STRIP, FOAM
3..	539 13 03-20.....	1	PULLEY, 52"	15..	539 10 44-11.....	1	KNOB w/ STUD
4..	539 13 03-47.....	1	BELT, 52"	16..	874 78 05-32	2	BOLT ⁵ / ₁₆ -18 X 2 HEX HD
5..	539 10 57-43.....	1	DECAL, NO STEP	17..	874 78 061-6.....	1	BOLT ¹ / ₂ -13 x 1 HEX HD
6..	539 13 03-49.....	1	DECAL, BELT ROUTING	18..	525 46 47-01.....	3	BOLT ⁵ / ₁₆ -18 x ³ / ₄ HEX FLG HD
7..	575 95 33-02.....	1	STRAP, LT, BLK	19..	539 99 08-61.....	4	BOLT ⁵ / ₁₆ -16 x 1 ³ / ₄ RDHD SQNK
8..	539 13 21-98.....	1	STRAP, RT, BLK	20..	872 14 06-08.....	2	BOLT ³ / ₈ -16 x 1 RDHD SQNK
9..	539 13 10-91	1	TUBE, MOUNT	21..	872 14 05-06.....	2	BOLT ⁵ / ₁₆ -18 x ³ / ₄ RDHD SQNK
10..	539 13 21-92.....	1	MOUNT HITCH, LOWER	22..	873 80 08-00.....	1	NUT ¹ / ₂ NYLOC
11..	539 13 21-94.....	1	MOUNT HITCH, UPPER	23..	539 11 28-99.....	11	NUT ⁵ / ₁₆ NYLOC
12..	576 22 14-02.....	1	BRACKET, SUPPORT, BLK	24..	539 97 69-79.....	2	NUT ³ / ₈ -16 NYLOC

ACCESSORIES

Mulch Kit



ACCESSORIES

ITEM	PART NO.	QTY.	DESCRIPTION
------	----------	------	-------------

1..	539 11 24-21.....	1	BAFFLE, LEFT
2..	539 11 24-35.....	1	BAFFLE, RIGHT
3..	539 11 23-44.....	1	MULCH CAP
4..	521 98 15-01.....	3	BLADE, 18" GATOR

ITEM	PART NO.	QTY.	DESCRIPTION
------	----------	------	-------------

5..	539 99 02-08.....	2	BOLT ⁵ / ₁₆ -18 x 1 RDHD SQNK
6..	539 99 03-16.....	7	BOLT ⁵ / ₁₆ -18 x ³ / ₄ RDHD SQNK
7..	539 99 07-17.....	9	HEX NUT ⁵ / ₁₆ -18 NYLOC
8..	539 99 06-92.....	1	WASHER ⁵ / ₁₆ STD FLT



Jonsered®

jonsered.com

115 71 40-27 Rev A

2014-09-15