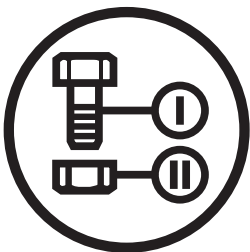


JOHNSON

Z61XF

967328201-00

Parts Manual
Zero Turn Mower



Please read the operator manual carefully and make sure you understand the instructions before using the machine.

When you need spare parts or support in service questions, warranty issues, etc., please consult the following professional:

This manual belongs to the machine with the manufacturing number:	Engine	Transmission

Manufacturing Number

The machine’s manufacturing number can be found on the printed plate affixed to the engine compartment.

Stated on the plate, from the top are:

- The machine’s type designation (I.D.).
- The manufacturer’s type number (Model).
- The machine’s serial number (Serial no.)

Please have the type designation and serial number available when ordering spare parts.

The engine’s manufacturing number is stamped on one of the valve covers.

The plate states:

- The engine’s model.
- The engine’s type.
- Code

Please have these available when ordering spare parts.

The wheel motors and hydrostatic pumps have a barcode decal affixed at the rear.

Accessories Available	
Collection System -----	966 79 31-01
Mulch Kit -----	965 89 40-02

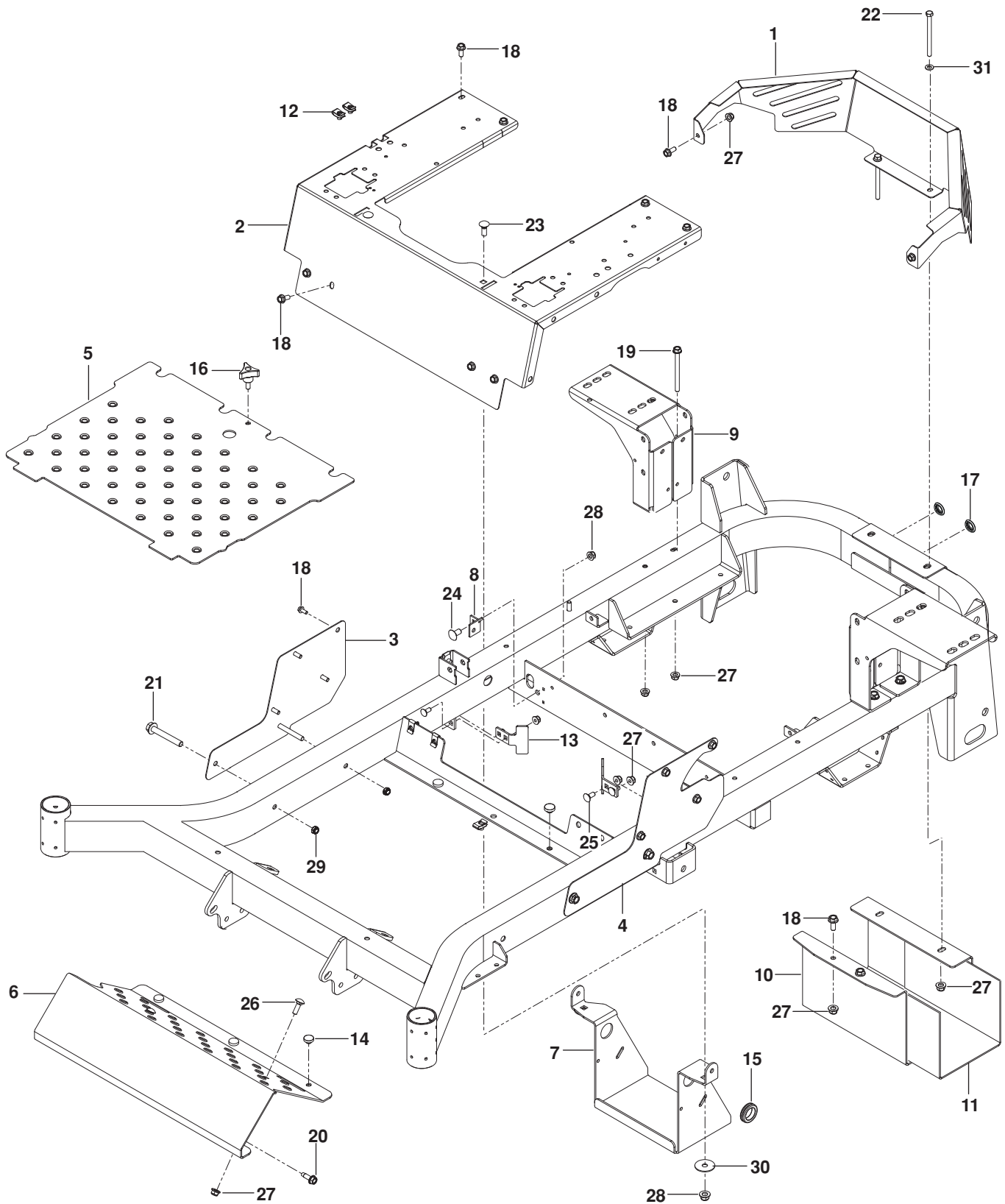
CONTENTS

FRAME.....	4
ENGINE PLATE.....	6
STEERING	8
IGNITION.....	10
PARK BRAKE.....	12
HYDRAULIC PUMP-MOTOR.....	14
WHEELS	16
MOWER LIFT / DECK LIFT	18
MOWER DECK / CUTTING DECK.....	20
SEAT	22
DECALS.....	24
ACCESSORIES.....	26
Blower.....	26
Bagger.....	28
Guard, Mount and Belt	30
Mulch Kit.....	32

Illustrations may or may not represent the actual assemblies and it is not recommended to use this manual as a guide to assemble or disassemble the mower.

NOTE: All fasteners are Grade 5 unless otherwise specified.

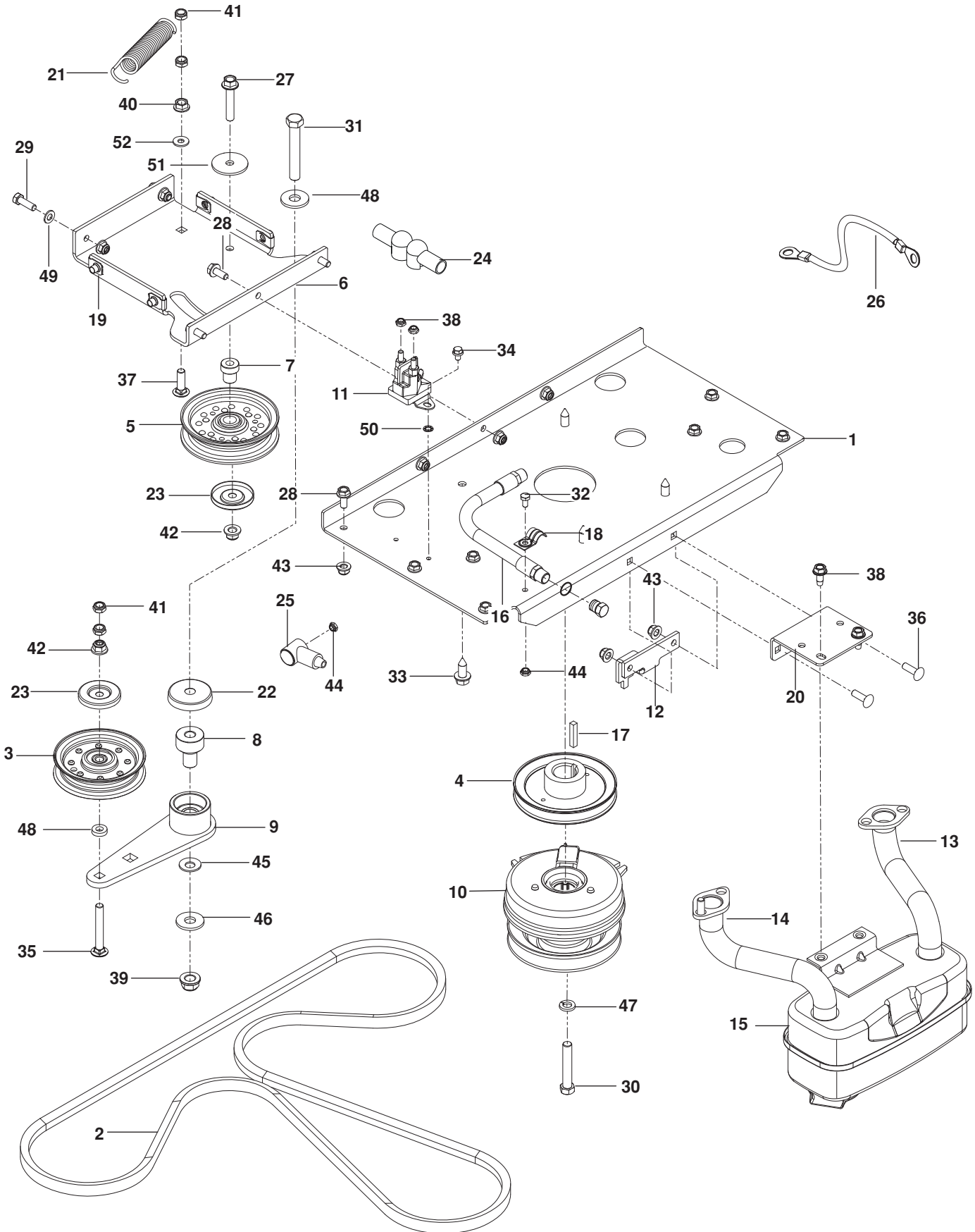
FRAME



FRAME

ITEM	PART NO.	QTY.	DESCRIPTION	ITEM	PART NO.	QTY.	DESCRIPTION
1..	576 87 85-03.....	1	GUARD, REAR RED	18..	874 49 05-12.....	18	BOLT $\frac{5}{16}$ -18 x $\frac{3}{4}$ HEX FLG HD
2..	586 86 77-05.....	1	SUPPORT, SEAT RED	19..	874 49 05 60.....	4	BOLT $\frac{5}{16}$ -18 x $3\frac{3}{4}$ HEX FLG HD
3..	586 56 02-02.....	1	PANEL, RT RED	20..	539 11 32-26.....	2	BOLT $\frac{5}{16}$ -18 x 1 HX THD FRM
4..	586 56 01-02.....	1	PANEL, LT RED	21..	874 49 06-44.....	2	BOLT $\frac{3}{8}$ -16 x $2\frac{3}{4}$ HEX FLG HD
5..	574 89 16-03.....	1	PLATE, FLOOR RED	22..	539 10 23-35.....	2	BOLT $\frac{5}{16}$ -18 x 4 HEX HD
6..	521 94 13-05.....	1	PLATE, FOOT REST RED	23..	872 14 06-08.....	2	BOLT $\frac{3}{8}$ -16 x 1 RD HD SQNK
7..	587 04 87-02.....	1	BRACKET, BATTERY BLK	24..	539 10 91-17.....	2	BOLT $\frac{3}{8}$ -16 x $\frac{3}{4}$ RD HD SQNK
8..	575 24 52-02.....	2	BRACKET, DAMPENER	25..	539 99 03-16.....	6	BOLT $\frac{5}{16}$ -18 x $\frac{3}{4}$ RD HD SQNK
9..	575 53 36-02.....	2	MOUNT, TANK BLK	26..	539 99 02-08.....	3	BOLT $\frac{5}{16}$ -18 x 1 RD HD SQNK
10..	575 23 04-02.....	1	SHIELD, MUFFLER BLK	27..	539 11 28-99.....	12	NUT $\frac{5}{16}$ -18 HEX FLG NYLOC
11..	539 13 28-59.....	1	SHIELD, HEAT	28..	521 99 65-01.....	4	NUT $\frac{3}{8}$ -16 HEX FLG NYLOC
12..	539 10 47-63.....	8	RETAINER, U TYPE $\frac{5}{16}$ -18	29..	539 20 02-82.....	6	NUT $\frac{3}{8}$ -16 HEX JAM NYLOC
13..	505 25 64-01.....	2	STOP, DECK	30..	819 13 24-16.....	2	WASHER, FLAT
14..	539 10 25-87.....	7	GROMMET, BUMPER	31..	819 11 11-16.....	2	WASHER $\frac{5}{16}$ SAE FLAT
15..	539 10 59-74.....	1	GROMMET, RUBBER	NOT SHOWN			
16..	539 10 44-11.....	1	KNOB w/ STUD	587 39 07-06	1	FRAME RED	
17..	587 99 05-01.....	2	PLUG, FRAME				

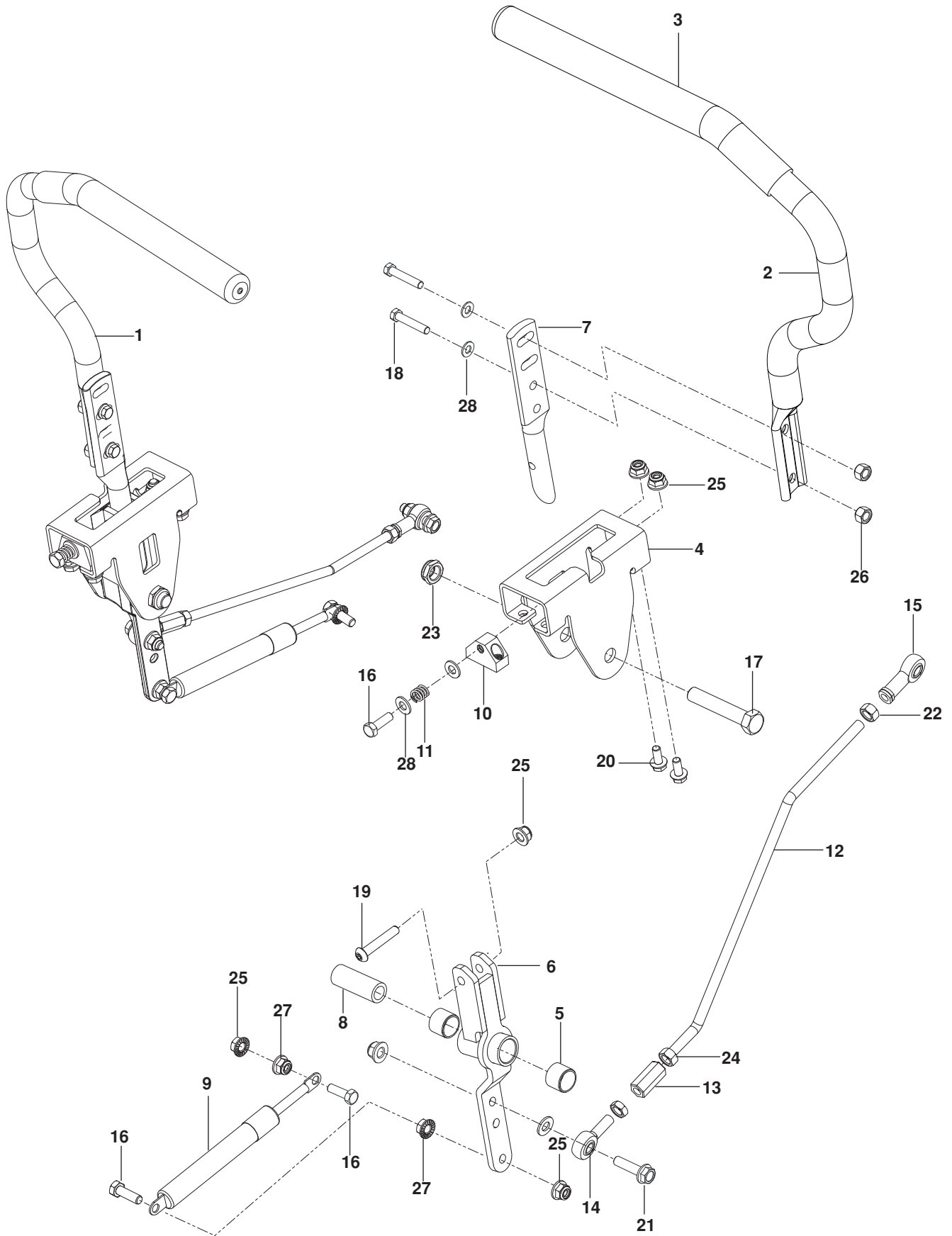
ENGINE PLATE



ENGINE PLATE

ITEM	PART NO.	QTY.	DESCRIPTION	ITEM	PART NO.	QTY.	DESCRIPTION
1..	586 65 14-02.....	1	PLATE, ENGINE BLK	30..	581 33 28-02.....	1	BOLT 7/16-20 x 2 1/2
2..	574 87 09-01.....	1	BELT	31..	874 78 08-52.....	1	BOLT 1/2-13 x 3 1/4
3..	532 17 58-20.....	1	PULLEY, IDLER SECONDARY	32..	874 78 04-08.....	1	BOLT 1/4-20 x 1/2
4..	574 81 10-01.....	1	PULLEY, V 1 1/8 BORE	33..	817 12 06-16.....	4	BOLT 3/8-16 x 1 THD FRM
5..	539 97 66-88.....	1	PULLEY, IDLER	34..	817 49 04-06.....	1	SCREW 1/4-20 x 8 THD FRM
6..	586 67 04-02.....	1	PLATE, IDLER SUPPORT	35..	872 14 06-22.....	1	BOLT 3/8-16 x 2 3/4 RD HD SQNK
7..	525 43 56-01.....	1	PIVOT, IDLER	36..	872 11 05-08.....	2	BOLT 5/16-18 x 1 RD HD SQNK
8..	510 20 63-01.....	1	PIVOT, BEARING	37..	872 14 06-10.....	1	BOLT 3/8-16 x 1 1/4 RD HD SQNK
9..	510 04 16-03.....	1	ARM, IDLER w/ BEARINGS	38..	817 49 05-12.....	2	BOLT 5/16-18 x 3/4 THD FRM
10..	574 60 70-01.....	1	CLUTCH, 200 FT-LB	39..	521 99 11-01.....	1	NUT 1/2-13 HEX FLG NYLOC
11..	532 19 25-07.....	1	SOLENOID	40..	873 40 06-00	1	NUT 3/8-16 HEX WHIZLK
12..	575 01 73-02.....	1	STOP, CLUTCH	41..	539 20 02-82.....	4	NUT 3/8-16 HEX JAM NYLOC
13..	583 95 57-01.....	1	EXHAUST TUBE, RT	42..	521 99 65-01.....	2	NUT 3/8-16 HEX FLG NYLOC
14..	583 95 56-01.....	1	EXHAUST TUBE, LT	43..	539 11 28-99.....	15	NUT 5/16-18 HEX FLG NYLOC
15..	539 13 16-04.....	1	MUFFLER ASM TWIN	44..	539 10 81-20.....	3	NUT 1/4-20 HEX THIN NYLOC
16..	584 82 55-01.....	1	HOSE, DRAIN	45..	539 11 55-28.....	1	WASHER 1/2" BELLEVILLE
17..	539 91 27-57.....	1	KEY 1/4 SQ x 1 1/4	46..	819 18 22-12.....	2	WASHER 1/2 FLT
18..	539 10 13-63.....	1	CLAMP	47..	539 90 02-47.....	1	WASHER 7/16 SLW
19..	539 10 47-63.....	4	RETAINER, U TYPE	48..	539 10 95-62.....	1	WASHER 3/8 x 3/4
20..	575 22 99-02.....	1	BRACKET, MUFFLER, BLK	49..	819 11 11-16.....	2	WASHER 5/16 SAE FLAT
21..	510 25 44-01.....	1	SPRING, PUMP	50..	539 99 00-53.....	1	WASHER 1/4 INT TOOTH LK
22..	539 11 46-62.....	1	SHIELD, DUST	51..	539 11 18-97.....	1	WASHER, SPECIAL
23..	510 25 45-01.....	2	SHIELD, DUST	52..	819 14 16-14.....	1	WASHER, FLAT
24..	539 13 15-63.....	2	INSULATOR	NOT SHOWN			
25..	539 10 27-59.....	1	INSULATOR	586 83 99-01	2	GASKET, MUFFLER KOH	
26..	539 10 27-57.....	1	CABLE	586 59 80-02	2	BOLT, MUFFLER	
27..	874 49 06-32.....	1	BOLT 3/8-16 x 2 HEX FLG HD	-----	1	ENGINE, Kohler ZT740 25 HP	
28..	874 49 05-12.....	11	BOLT 5/16-18 x 3/4 HEX FLG HD	For engine replacement parts, see a Kohler dealer			
29..	874 78 05-16.....	2	BOLT 5/16-18 x 1				

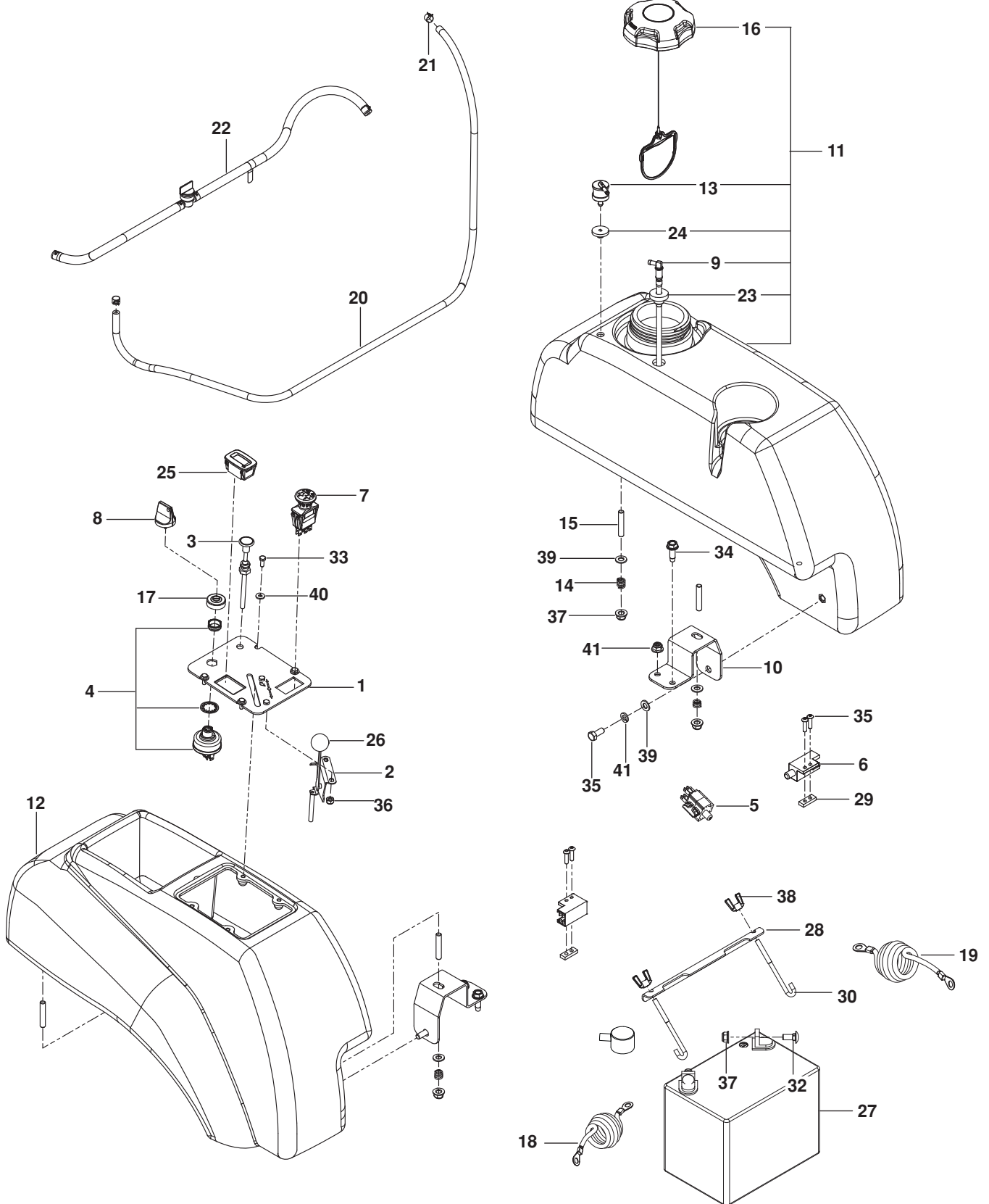
STEERING



STEERING

ITEM	PART NO.	QTY.	DESCRIPTION	ITEM	PART NO.	QTY.	DESCRIPTION
1..	539 13 20-09.....	1	LEVER w/ GRIP RT	15..	539 11 66-90.....	2	ROD END LT
2..	539 13 20-10.....	1	LEVER w/ GRIP LT	16..	874 78 05-20.....	6	BOLT 5/16-18 x 1 1/4 HEX HD
3..	539 13 08-94.....	2	GRIP, FOAM	17..	874 78 08 44.....	2	BOLT 1/2-13 x 2 3/4 HEX HD
4..	577 25 17-01.....	2	BRACKET, CONTROL	18..	539 97 69-35.....	4	BOLT 5/16-18 x 1 1/2 HEX HD
5..	532 43 82-82.....	4	BEARING	19..	576 85 04-02.....	2	SCREW 5/16-18 X 1 3/4 BTN HD
6..	587 18 77 01.....	2	LEVER, CONTROL	20..	874 49 05 12.....	8	BOLT 5/16-18 X 3/4 HEX FLG HD
7..	577 42 00-01.....	2	LEVER, HANDLE	21..	525 54 40-01.....	4	BOLT 5/16-18 x 1 1/4 HEX FLG HD
8..	584 92 72-01.....	2	SPACER, PIVOT CONTROL	22..	539 99 02-23.....	4	NUT 5/16-24 HEX
9..	539 10 27-20.....	2	DAMPENER	23..	539 10 80-10.....	2	NUT 1/2-13 HEX JAM NYL GR2
10..	577 25 18-01	2	BLOCK, TRACKING	24..	539 99 10-73.....	2	NUT 5/16-24 HEX JAM LH
11..	539 10 28-45.....	2	SPRING	25..	539 11 28-99.....	10	NUT 5/16-18 HEX FLG NYLOC
12..	574 81 14-01.....	2	ROD, MOTION CONTROL	26..	539 99 07-17.....	6	NUT 5/16-18 HEX NYLOC
13..	539 11 66-89.....	2	COUPLER, ROD END	27..	539 99 05-85.....	4	NUT 5/16-18 HEX WHIZLK
14..	539 11 57-29.....	2	ROD END RT	28..	819 11 11-16.....	12	WASHER 5/16 SAE FLT

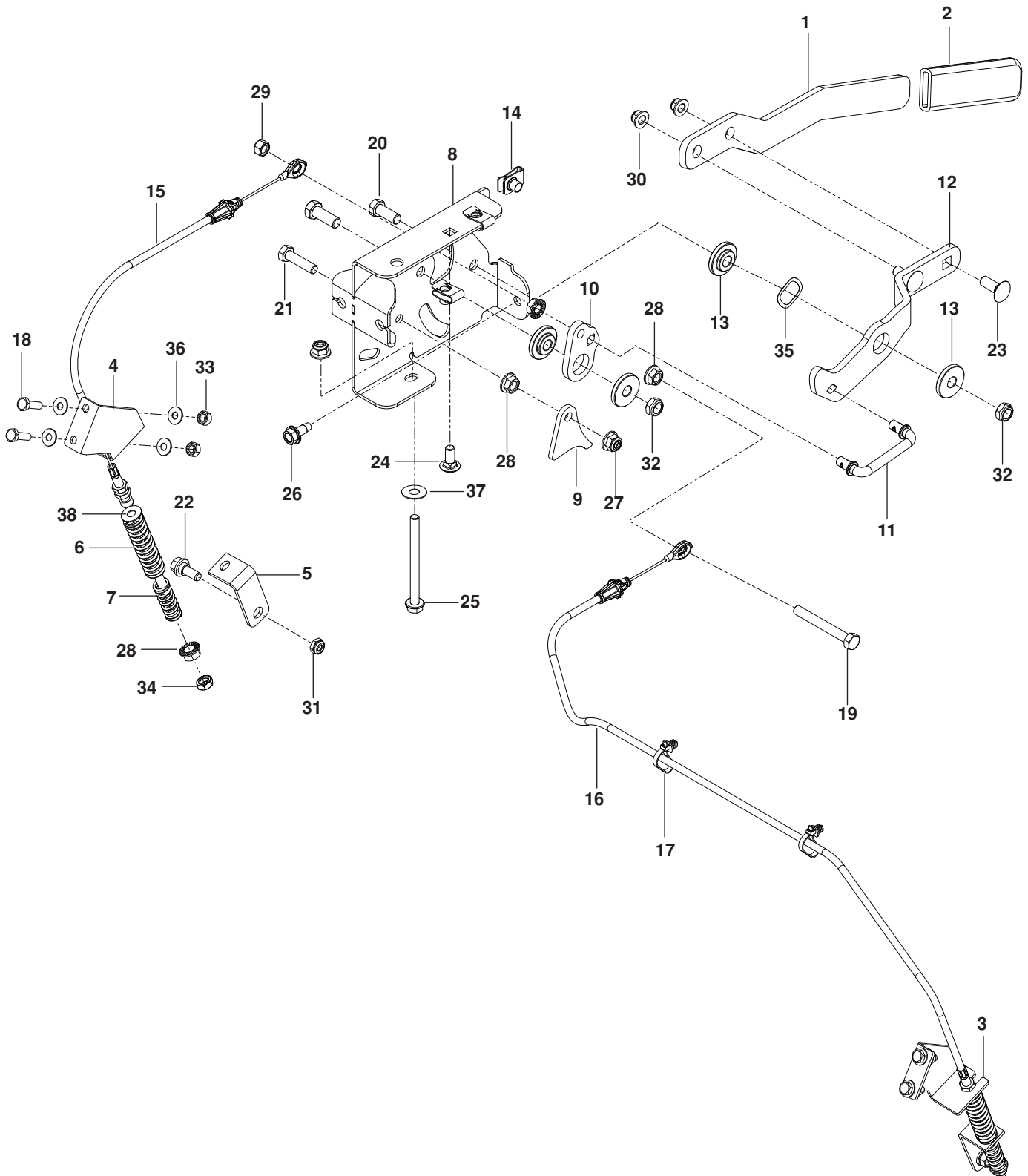
IGNITION



IGNITION

ITEM	PART NO.	QTY.	DESCRIPTION	ITEM	PART NO.	QTY.	DESCRIPTION
1..	574 84 12-04.....	1	PLATE, CONSOLE, BLK	23..	539 10 52-45.....	1	GROMMET, RUBBER
2..	539 10 27-32.....	1	CABLE, THROTTLE	24..	576 61 82-01.....	1	GROMMET, CHECK VALVE
3..	584 97 18-01.....	1	CABLE, CHOKE	25..	586 16 18-01.....	1	METER, SERVICE
4..	574 45 54-01.....	1	SWITCH, IGNITION	26..	539 13 30-49.....	1	KNOB
5..	539 11 37-92.....	1	SWITCH, BRAKE	27..	539 10 24-36.....	1	BATTERY
6..	532 10 95-53.....	2	SWITCH, INTERLOCK	28..	510 03 00-01.....	1	BRACKET, BATTERY MOUNT
7..	539 13 16-27.....	1	SWITCH, PTO 10 AMP	29..	581 22 30-01.....	2	PLATE, TAPPED
8..	574 45 55-01.....	1	KEY, IGNITION	30..	510 06 40-01.....	2	HOOK, J
9..	576 46 92-01.....	1	FITTING, FUEL	31..	874 78 05-12.....	2	BOLT ⁵ / ₁₆ -18 x ³ / ₄ HEX HD
10..	539 13 16-71.....	2	SUPPORT, TANK, BLK	32..	539 99 03-16.....	2	BOLT ⁵ / ₁₆ -18 x ³ / ₄ RD HD SQNK
11..	585 72 23-02.....	1	TANK ASSY LT BLK	33..	539 99 04-11.....	6	SCREW #10-24 x ¹ / ₂ SLT
12..	576 68 37-01.....	1	CONSOLE, RT BLK	34..	817 49 05-16.....	3	SCREW ⁵ / ₁₆ -18 x 1 THD FRM
13..	576 61 81-01.....	1	VALVE, FUEL CHECK	35..	574 82 27-01.....	4	SCREW #10-24 x ³ / ₄ SKT HD
14..	539 10 28-45.....	6	SPRING	36..	539 97 69-77.....	2	NUT #10-24 NYLOC
15..	539 10 25-02.....	6	STUD ⁵ / ₁₆ -18	37..	539 11 28-99.....	12	NUT ⁵ / ₁₆ -18 HEX FLG NYLOC
16..	575 01 81-01.....	1	FUEL CAP w /TETHER	38..	539 99 09-97.....	2	NUT ¹ / ₄ -20 WING NUT NYLOC
17..	539 10 31-78.....	1	CAP, IGNITION SWITCH NUT	39..	819 11 11-16.....	8	WASHER ⁵ / ₁₆ SAE
18..	588 03 07-01.....	1	CABLE, POSITIVE 25"	40..	819 07 08-18.....	4	WASHER #10
19..	588 03 08-01.....	1	CABLE, NEGATIVE 39"	41..	810 03 05-00.....	2	WASHER ⁵ / ₁₆ SLW
20..	587 04 45 55.....	1	HOSE ³ / ₁₆ VAPOR 55"	NOT SHOWN			
21..	575 43 65-01.....	2	CLAMP, HOSE	585 99 97-01	1	HARNESS, MAIN	
22..	586 12 39-01.....	1	ASSY, FUEL LINE				

PARK BRAKE



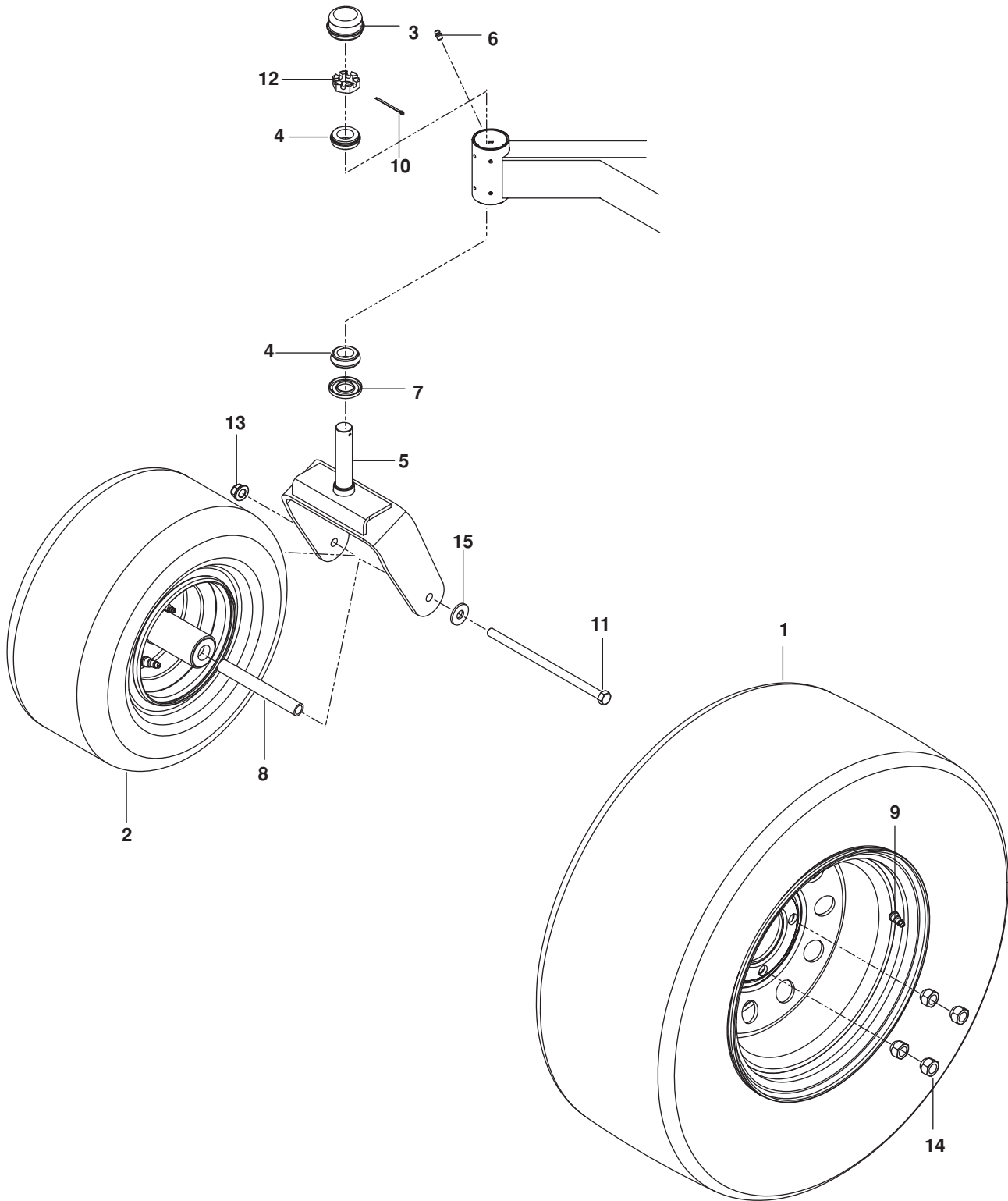
PARK BRAKE

ITEM	PART NO.	QTY.	DESCRIPTION	ITEM	PART NO.	QTY.	DESCRIPTION
1..	575 01 75-02.....	1	ARM, BRAKE	20..	539 99 05-63.....	2	BOLT 3/8-16 x 1 HEX HD
2..	539 12 09 21.....	1	GRIP, BRAKE HANDLE	21..	539 99 02-09.....	1	BOLT 5/16-18 x 1 HEX HD
3..	575 22 96-02.....	1	BRACKET, RT BLK	22..	539 11 03-03.....	2	BOLT 5/16 SHOULDER
4..	575 22 97-02.....	1	BRACKET, LT BLK	23..	539 99 06-45.....	2	BOLT 3/8-16 x 1 RD HD SQNK
5..	575 22 98-02.....	2	BRACKET, BRAKE	24..	539 99 03-16.....	1	BOLT 5/16-18 x 3/4 RD HD SQNK
6..	575 23 02-01.....	2	SPRING, RETURN	25..	539 13 17-80.....	1	BOLT 5/16-18 x 3 3/4 HEX FLG HD
7..	575 23 03-01.....	2	SPRING, ENGAGEMENT	26..	874 49 05-12.....	1	BOLT 5/16-18 x 3/4 THD FRM
8..	539 13 21-58.....	1	MOUNT, BRAKE	27..	539 11 28-99.....	2	NUT 5/16-18 FLANGE NYLOC
9..	539 13 21-54.....	1	ACTUATOR, SWITCH	28..	539 99 05-85.....	5	NUT 5/16-18 HEX WHIZLK
10..	539 13 21-53.....	1	BELLCRANK, BRAKE	29..	539 99 07-17.....	1	NUT 5/16-18 HEX NYLOC
11..	539 13 24-24.....	1	LINKAGE, BRAKE	30..	521 99 65-01.....	2	NUT 3/8-16 HEX FLANGE NYL
12..	539 13 24-23.....	1	LEVER, BRAKE	31..	539 11 56-17.....	2	NUT 5/16 HEX NYLOC
13..	539 13 21-61.....	4	BUSHING, BRAKE	32..	539 20 02-82.....	2	NUT 3/8-16 HEX JAM NYLOC
14..	539 10 47-63.....	3	RETAINER, U TYPE	33..	539 97 69-78.....	4	NUT 1/4-20 HEX NYLOC
15..	539 13 21-73.....	1	CABLE, BRAKE SHORT	34..	539 10 78-97.....	2	NUT 5/16-18 HEX JAM
16..	539 13 21-74.....	2	CABLE, BRAKE LONG	35..	539 13 30-07.....	1	WASHER .825 WAVE
17..	505 28 00-01.....	2	TIE w/ CLIP	36..	539 99 00-55.....	8	WASHER 1/4 SAE FLT
18..	539 99 06-43.....	4	BOLT 1/4-20 x 7/8 HEX HD	37..	539 10 95-54.....	2	WASHER 1/2 FLT
19..	539 10 83-96.....	1	BOLT 5/16-18 x 2 1/2 HEX HD TPBLT	38..	539 99 01-22.....	2	WASHER 5/16 SAE FLT

HYDRAULIC PUMP-MOTOR

ITEM	PART NO.	QTY.	DESCRIPTION	ITEM	PART NO.	QTY.	DESCRIPTION
1..	577 22 77-02.....	1	TRANS, ZT-3100, LT	15..	539 10 25-87.....	2	GROMMET, BUMPER
2..	577 22 77-01.....	1	TRANS, ZT-3100, RT	16..	539 97 69-88.....	2	HAIRPIN COTTER
3..	575 01 71-02.....	1	BRACKET, TRANS, LT	17..	539 99 06-43.....	1	BOLT 1/4-20 x 7/8 HEX HD
4..	575 01 70-02.....	1	BRACKET, TRANS, RT	18..	539 99 02-09.....	4	BOLT 5/16-18 x 1 HEX HD
5..	539 13 16-16.....	1	LINKAGE, BYPASS LT	19..	539 10 17-21.....	4	BOLT 5/16-18 x 2 3/4 HEX HD
6..	539 13 16-18.....	1	LINKAGE, BYPASS RT	20..	539 10 85-51.....	2	BOLT 3/8-16 x 2 1/2 HEX HD GR8
7..	574 89 21-01.....	2	HOSE, EXPANSION	21..	574 23 38-01.....	4	BOLT 5/16-18 x 2 1/4 HEX FLG HD
8..	586 06 75-01.....	1	HOSE, FUEL	22..	539 97 69-78.....	1	NUT 1/4-20 HEX NYLOC
9..	585 31 82-01.....	1	TANK, EXPANSION	23..	539 11 28-99.....	8	NUT 5/16-18 HEX FLG NYLOC
10..	584 99 42-02.....	2	COVER, FAN	24..	819 11 11-16.....	8	WASHER 5/16 SAE FLT
11..	539 11 34-66.....	2	FILTER, HYDRO	25..	539 99 01-18.....	2	WASHER 3/8 SPLT LK
12..	530 09 56-46.....	1	FILTER	26..	539 99 01-87.....	4	WASHER 5/16 SLW
13..	586 07 27-01.....	1	CAP, TANK	27..	539 99 00-55.....	1	WASHER 1/4 SAE FLT
14..	574 86 85-01.....	1	TUBE 10 3/8" SPACER	28..	539 99 01-22.....	2	WASHER 3/8 SAE FLT

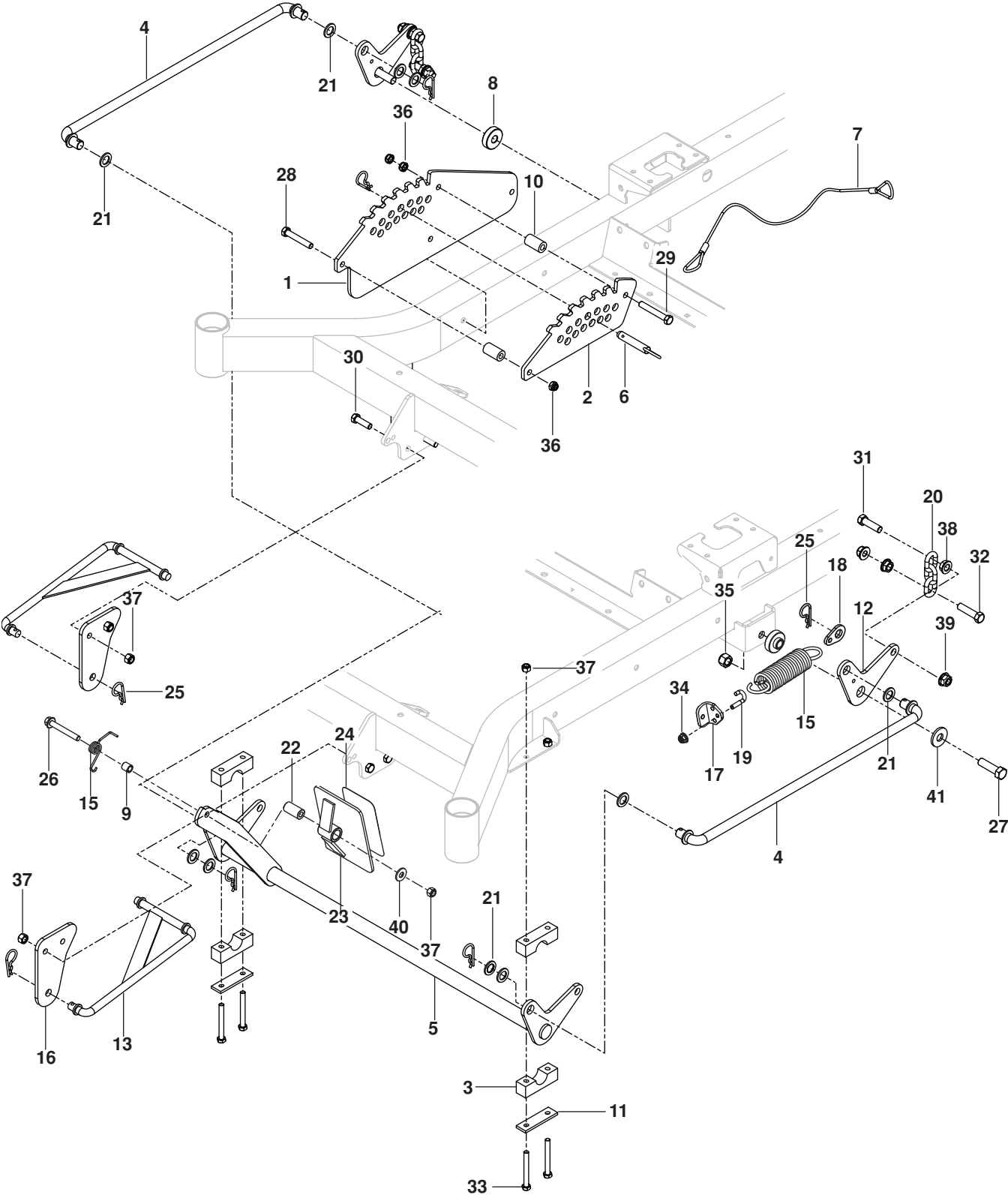
WHEELS



WHEELS

ITEM	PART NO.	QTY.	DESCRIPTION	ITEM	PART NO.	QTY.	DESCRIPTION
1..	580 74 70-01.....	2.....	WHEEL ASSY 22 x 10-10	9..	539 91 22-34.....	2.....	AIR VALVE
2..	581 19 95-01.....	2.....	WHEEL ASSY 13 x 6.5	10..	539 10 28-89.....	2.....	COTTER PIN 1/8 x 2
3..	539 10 25-35.....	2.....	CAP, GREASE	11..	539 10 55-17.....	2.....	BOLT 1/2-13 x 9 1/2 HEX HD
4..	539 10 25-43.....	4.....	BEARING, ROLLER TAPERED	12..	539 10 28-52.....	2.....	NUT 1"-14 SLOTTED JAM
5..	575 32 92-06.....	2.....	YOKE, CASTER, RED	13..	521 99 11-01	2.....	NUT 1/2-13 HEX FLG NYLOC
6..	539 10 14-74.....	2.....	ZERK	14..	539 10 11-73.....	8.....	NUT 1/2-20 LUG
7..	539 10 28-51.....	2.....	SEAL	15..	539 10 95-54.....	2.....	WASHER 1/2 FLT
8..	575 33 49-01.....	2.....	SPACER, PIVOT				

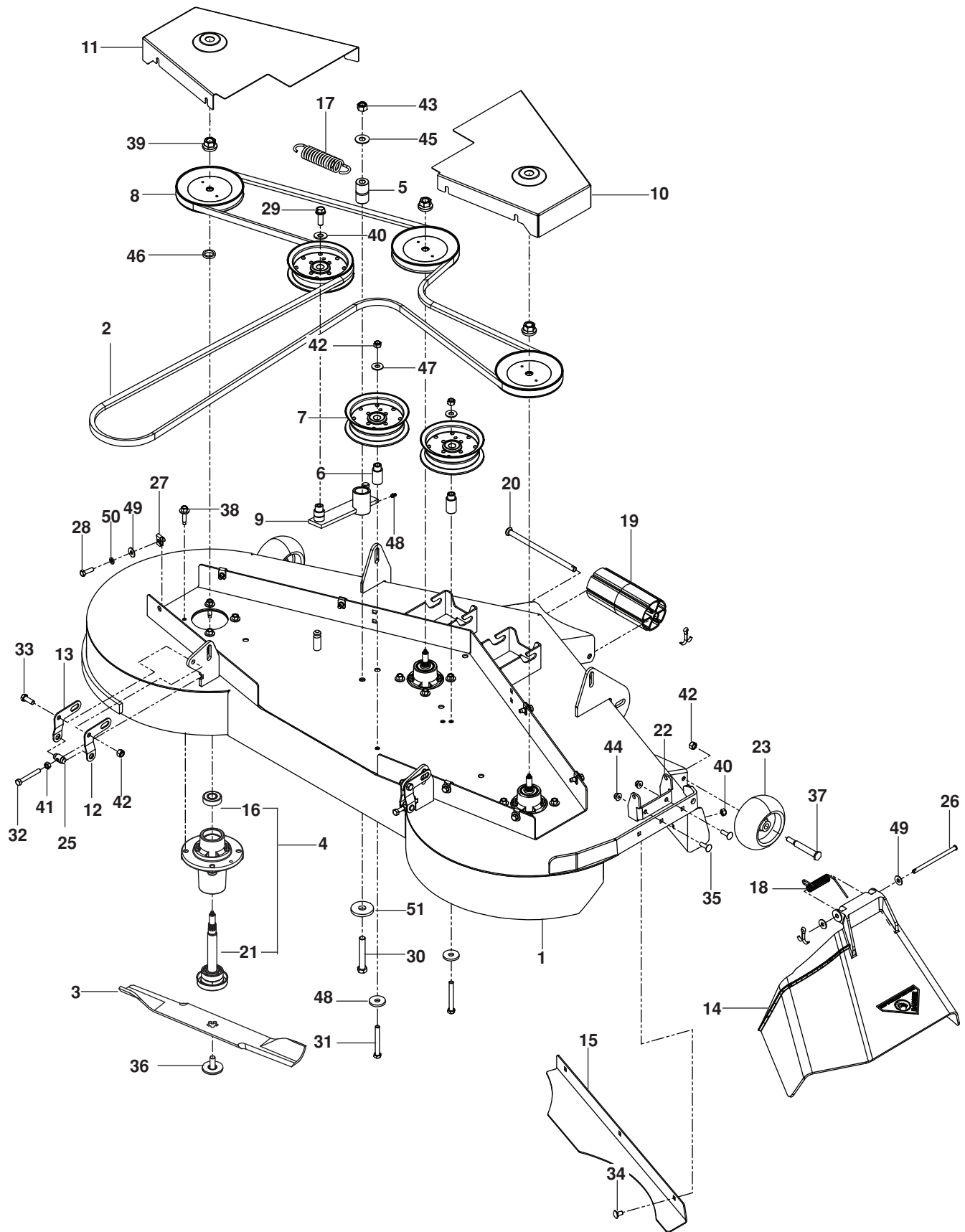
MOWER LIFT / DECK LIFT



MOWER LIFT / DECK LIFT

ITEM	PART NO.	QTY.	DESCRIPTION	ITEM	PART NO.	QTY.	DESCRIPTION
1..	539 13 30-04.....	1	PLATE, HEIGHT, MAIN	22..	539 10 18-36.....	1	BUSHING, SLEEVE
2..	539 13 28-99.....	1	PLATE, HEIGHT	23..	539 11 42-80.....	1	PEDAL, FOOT
3..	539 10 48-08.....	4	PILLOW BLOCK	24..	539 12 13-22.....	1	PAD, FOOT
4..	539 11 08-08.....	2	LINK, LIFT	25..	539 11 55-01.....	7	COTTER PIN
5..	584 41 26-01.....	1	SHAFT, LIFT	26..	874 49 06-44.....	1	BOLT 3/8-16 x 2 3/4 HEX FLG HD
6..	539 10 25-26.....	1	PIN, LIFT	27..	539 10 81-81.....	2	BOLT 1/2-13 x 1 3/4 HEX HD GR 8
7..	539 10 50-59.....	1	LANYARD	28..	539 99 06-29.....	1	BOLT 3/8-16 x 2 1/4
8..	586 70 17-01.....	2	SPACER, IDLER	29..	539 99 06-37.....	1	BOLT 3/8-16 x 2 1/2
9..	539 13 28-52.....	1	SPACER	30..	539 99 05 63.....	4	BOLT 3/8-16 x 1
10..	539 10 45-30.....	2	SPACER	31..	539 10 11-75.....	4	BOLT 7/16-14 x 1 1/2
11..	584 39 27-02.....	2	BAR, REINFORCEMENT	32..	539 10 80-73.....	4	BOLT 7/16-14 x 1 3/4
12..	539 13 23-78.....	2	BELLCRANK, REAR	33..	539 10 17-21.....	4	BOLT 5/16-18 x 2 3/4
13..	539 11 22-23.....	2	LINKAGE, STRUT	34..	539 11 28-99.....	6	NUT 5/16-18 FLG NYLOC
14..	539 13 28-50.....	1	SPRING, TORSION	35..	539 10 13-31.....	2	NUT 1/2 HEX NYLOC
15..	539 10 26-42.....	1	SPRING	36..	539 20 02-82.....	3	NUT 3/8-16 HEX JAM NYLOC
16..	539 13 20-17.....	2	BRACKET, STRUT	37..	539 97 69-79.....	5	NUT 3/8-16 HEX NYLOC
17..	539 13 17-91.....	1	MOUNT, SPRING	38..	539 10 25-82.....	8	NUT 7/16-14 HEX WHIZ LK
18..	539 13 17-92.....	1	TAB, SPRING	39..	539 13 20-19.....	8	NUT 7/16-14 HEX WHIZ LK SP
19..	539 11 28-96.....	1	J-BOLT	40..	539 99 05-17.....	1	WASHER 3/8 FLT
20..	539 10 96-93.....	4	LIFT CHAIN, 3 LINK	41..	539 10 95-54.....	2	WASHER 1/2 FLT
21..	539 99 10-43.....	10	BUSHING, .625				

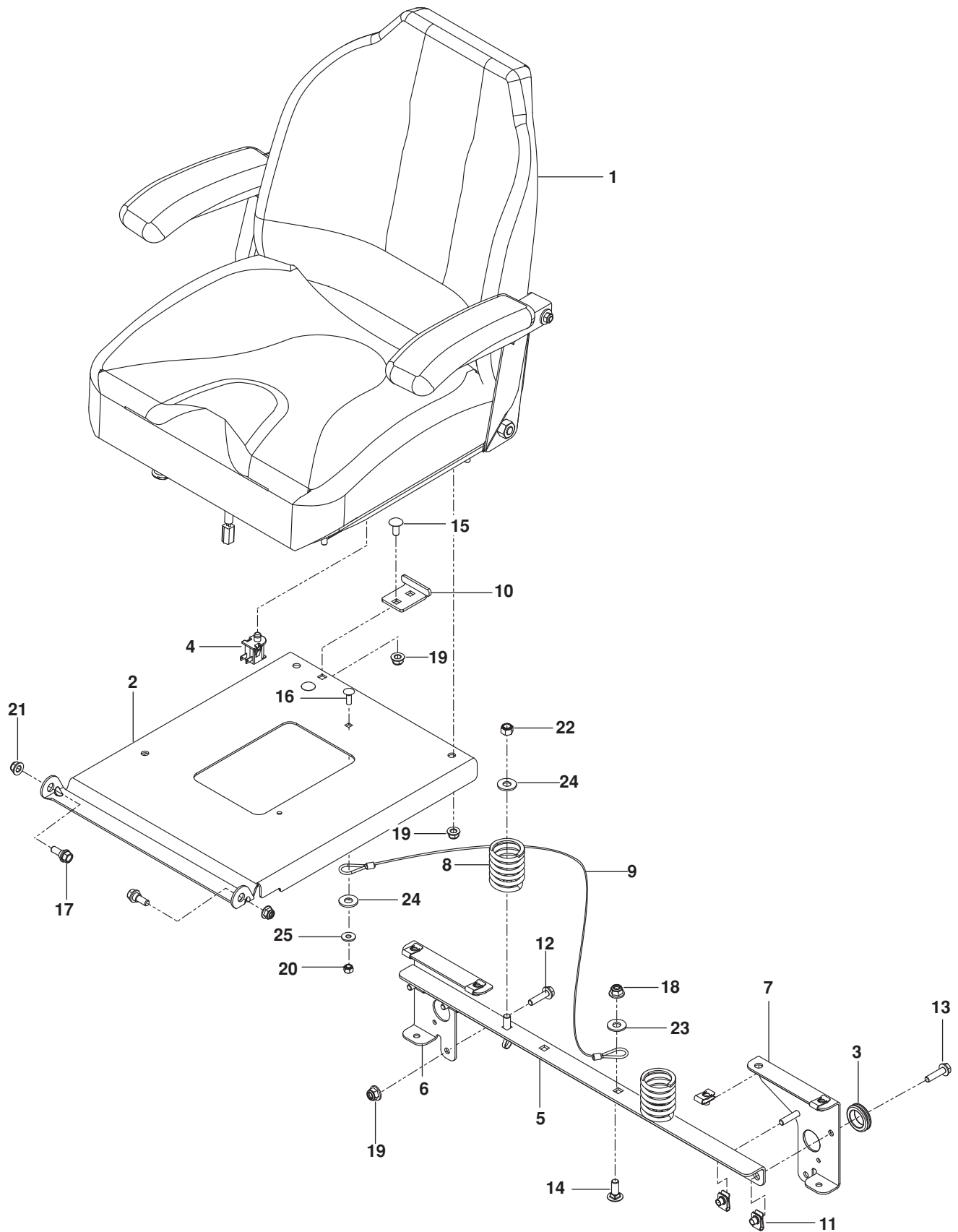
MOWER DECK / CUTTING DECK



MOWER DECK / CUTTING DECK

ITEM	PART NO.	QTY.	DESCRIPTION	ITEM	PART NO.	QTY.	DESCRIPTION
1..	581 29 77-04.....	1	DECK RED	27..	539 10 47-63.....	8	RETAINER, U TYPE $\frac{5}{16}$ -18
2..	539 10 43-35.....	1	BELT, DECK	28..	539 97 69-34.....	8	BOLT $\frac{5}{16}$ -18 x $\frac{3}{4}$ HEX HD
3..	539 11 33-12.....	3	BLADE, 21"	29..	539 99 05-82.....	1	BOLT $\frac{3}{8}$ -16 x 1 HEX WHIZLK
4..	539 13 18-98.....	3	HOUSING ASSEMBLY	30..	539 10 34-33.....	1	BOLT $\frac{1}{2}$ -13 x $3\frac{1}{4}$ HEX HD
5..	539 10 34-27.....	1	BUSHING, PIVOT	31..	874 78 06-48.....	2	BOLT $\frac{3}{8}$ -16 x 3 HEX HD
6..	539 11 21-69.....	2	BUSHING, IDLER	32..	539 10 83-96.....	2	BOLT $\frac{5}{16}$ -18 x $2\frac{1}{2}$ HEX TPBLT
7..	539 13 27-28.....	3	PULLEY, IDLER	33..	539 99 05-63.....	2	BOLT $\frac{3}{8}$ -16 x 1 HEX HD
8..	539 11 33-00.....	3	PULLEY	34..	539 99 07-99.....	3	BOLT $\frac{5}{16}$ -18 x $\frac{5}{8}$ RD HD SQNK
9..	539 11 21-98.....	1	ARM, IDLER	35..	872 11 05-08.....	2	BOLT $\frac{5}{16}$ -18 x 1 RD HD SQNK
10..	587 48 09-01.....	1	BELT SHIELD, RT BLK	36..	532 19 30-03.....	3	BOLT $\frac{7}{16}$ BLADE
11..	587 48 08-01.....	1	BELT SHIELD, LT BLK	37..	532 13 76-44.....	2	BOLT, SHOULDER
12..	584 85 94-02.....	2	PITCH ADJUST, RT	38..	539 10 76-30.....	12	SCREW, WSH HD
13..	584 85 94-04.....	2	PITCH ADJUST, LT	39..	532 40 02-34.....	3	NUT $\frac{9}{16}$ TOP CENTER LOCK
14..	539 11 07-34.....	1	CHUTE, DISCHARGE	40..	539 99 07-17.....	3	NUT $\frac{5}{16}$ -18 HEX NYLOC
15..	539 11 33-17.....	1	PLATE, CONFINEMENT	41..	539 99 01-96.....	2	NUT $\frac{5}{16}$ -18 HEX
16..	532 11 04-85.....	3	BEARING, BALL	42..	539 97 69-79.....	6	NUT $\frac{3}{8}$ -16 HEX NYLOC
17..	539 10 32-56.....	1	SPRING	43..	539 10 13-31.....	1	NUT $\frac{1}{2}$ HEX NYLOC
18..	539 11 07-35.....	1	SPRING, TORSION	44..	539 11 28-99.....	2	NUT $\frac{5}{16}$ -18 HEX FLG NYLOC
19..	532 17 60-66.....	1	ROLLER, NOSE	45..	539 99 05-50.....	1	WASHER $\frac{1}{2}$ STD FLT
20..	532 17 91-27.....	1	ROD, ROLLER, NOSE	46..	532 18 76-90.....	3	WASHER-SPACER
21..	532 18 72-91.....	3	SHAFT	47..	539 99 05-17.....	2	WASHER $\frac{3}{8}$ FLAT STD
22..	581 60 60-04.....	1	BRACKET RED	48..	539 10 65-04.....	2	WASHER, HEAVY
23..	532 13 39-57.....	2	WHEEL, GAUGE	49..	539 99 06-92.....	10	WASHER $\frac{5}{16}$ STD FLT
24..	539 97 69-98.....	1	ZERK	50..	539 10 96-00.....	8	WASHER $\frac{5}{16}$ SPRING
25..	539 13 18-59.....	2	TRUNION, PITCH	51..	539 10 22-43.....	1	WASHER, SUPPORT
26..	539 11 07-36.....	1	PIN $\frac{5}{16}$ CLEVIS				

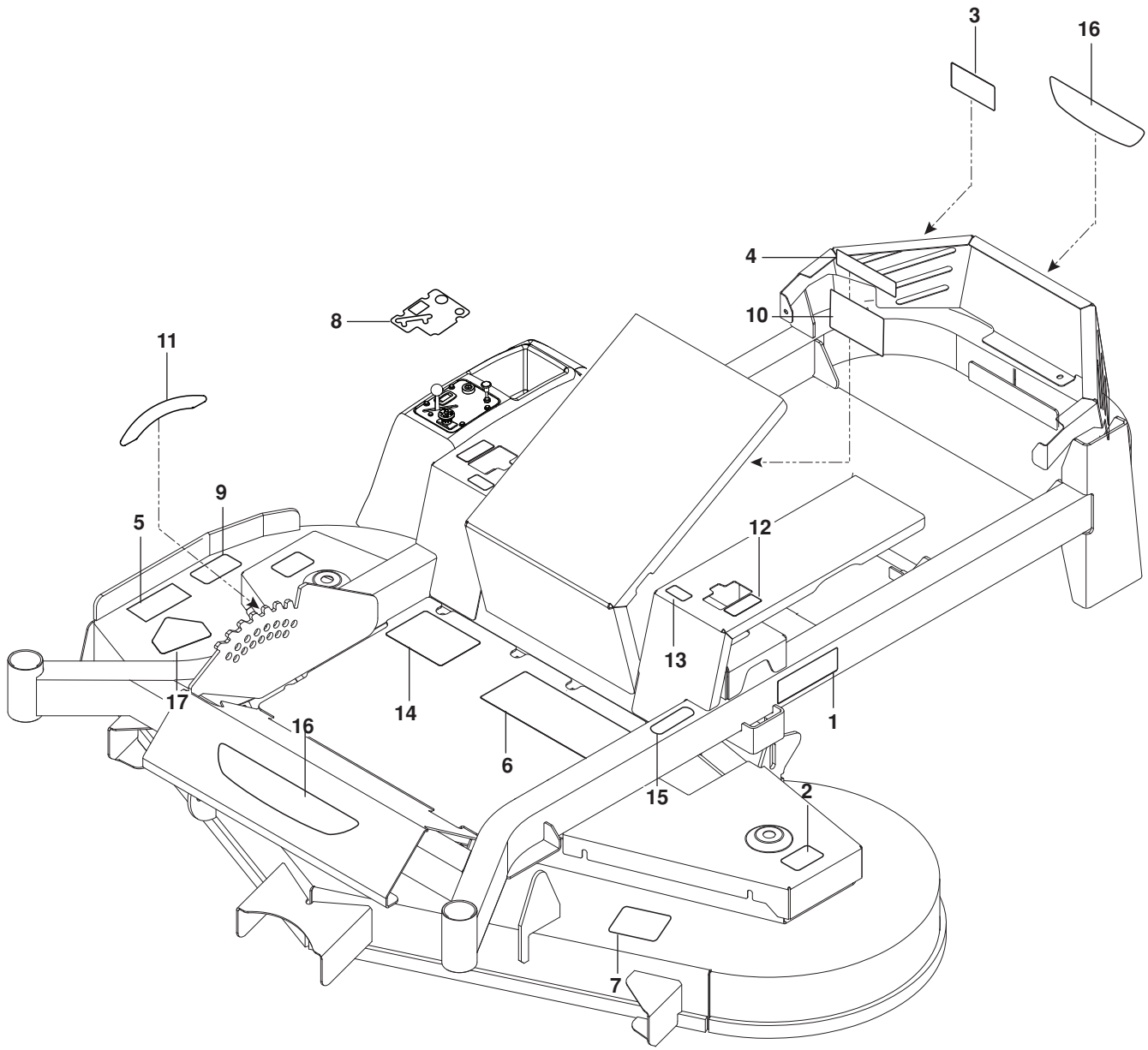
SEAT



SEAT

ITEM	PART NO.	QTY.	DESCRIPTION	ITEM	PART NO.	QTY.	DESCRIPTION
1..	586 18 84-01.....	1	SEAT	14..	872 14 06-08.....	3	BOLT $\frac{3}{8}$ -16 x 1 RD HD SQNK
2..	586 86 78 05.....	1	MOUNT, SEAT RED	15..	872 05 05-06.....	2	BOLT $\frac{5}{16}$ -18 x 1 RD HD SQNK
3..	539 10 59-74.....	1	GROMMET RUBBER	16..	872 11-04-06	1	BOLT $\frac{1}{4}$ -20 x $\frac{3}{4}$ RD HD SQNK
4..	539 119741.....	1	SWITCH, SEAT	17..	539 13 08-96.....	2	BOLT $\frac{5}{16}$ -18 HEX SHOULDER
5..	584 80 91-02.....	1	SUPPORT, SEAT	18..	521 99 65-01.....	1	NUT $\frac{3}{8}$ -16 FLG HEX NYLOC
6..	584 99 01-02.....	1	SUPPORT, RT BLK	19..	539 11 28-99.....	8	NUT $\frac{5}{16}$ -18 HEX FLG NYLOC
7..	584 99 02-02.....	1	SUPPORT, LT BLK	20..	873 80 04-00.....	1	NUT $\frac{1}{4}$ -20 HEX NYLOC
8..	532 12 41-81.....	2	SPRING, SEAT	21..	873 80 05-00.....	2	NUT $\frac{5}{16}$ -18 HEX NYLOC
9..	539 10 32-47.....	1	LANYARD, SEAT	22..	539 97 69-79.....	2	NUT $\frac{3}{8}$ -16 HEX NYLOC
10..	539 13 07-93.....	1	SEAT STOP	23..	539 99 05-17.....	4	WASHER $\frac{3}{8}$ FLT STD
11..	539 10 47-63.....	8	RETAINER, U TYPE	24..	819 14 16-14.....	3	WASHER $\frac{3}{8}$ FLT STD
12..	874 49 05-12.....	2	BOLT $\frac{5}{16}$ -18 x 1 HX THD FRM	25..	819 09 12-16.....	1	WASHER $\frac{1}{4}$ FLT
13..	525 54 40-01.....	4	BOLT $\frac{5}{16}$ -18 x $\frac{1}{4}$ HEX FLG HD				

DECALS



DECALS

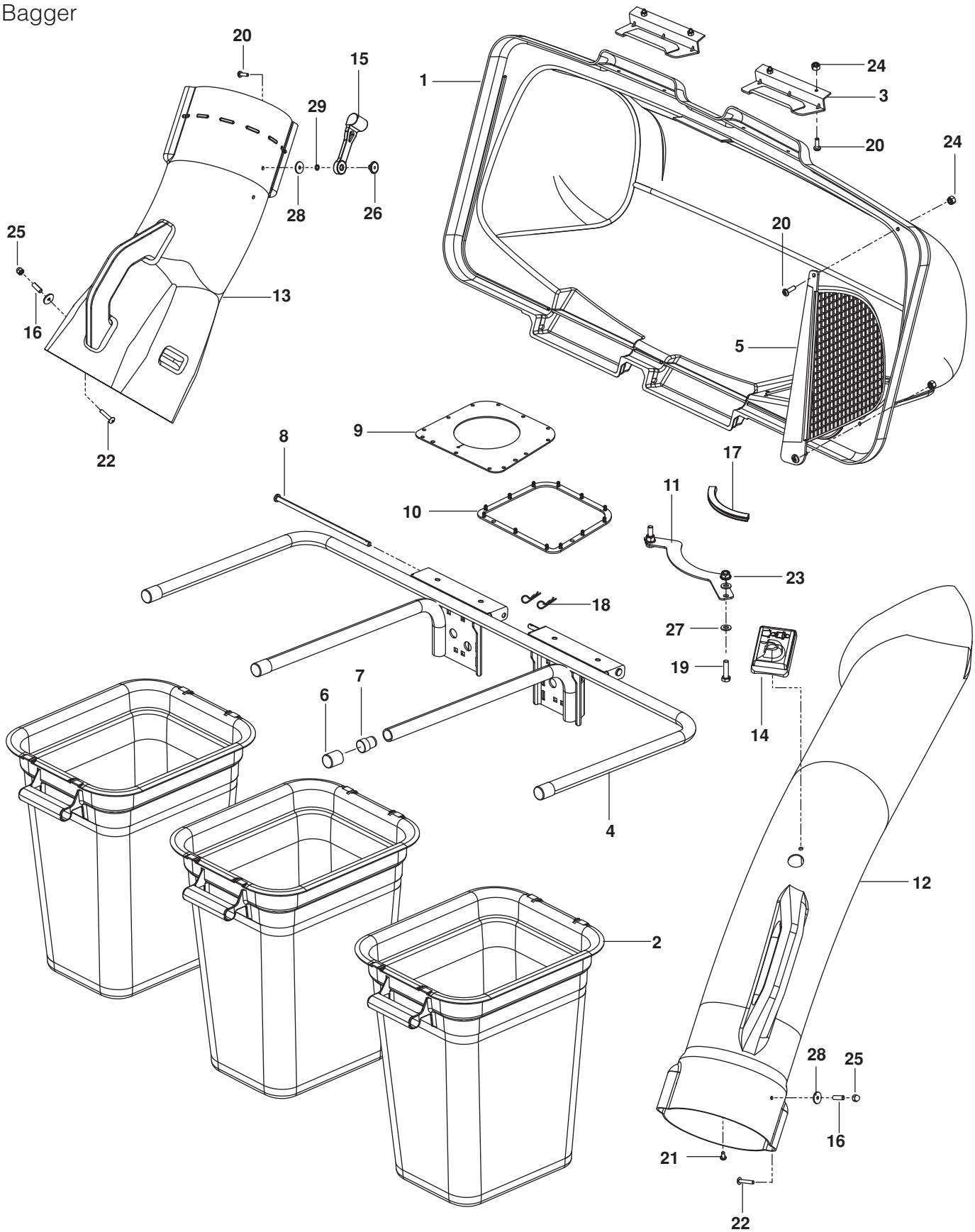
ITEM	PART NO.	QTY.	DESCRIPTION	ITEM	PART NO.	QTY.	DESCRIPTION
1..	587 46 24-01.....	1DECAL, Z52XF	10..	539 13 21-87	1DECAL, SERVICE
2..	581 72 43-01	2DECAL, NO STEP	11..	587 45 75-01	1DECAL, HEIGHT ADJUST
3..	539 10 57-44	1DECAL, DANGER BLT DRIVE	12..	587 45 72-01.....	2DECAL, MOTION CONTROL
4..	539 10 57-45	1DECAL, BATTERY WARNING	13..	586 45 71-01	2DECAL, TRACKING
5..	539 10 57-46	1DECAL, SEVERING	14..	586 49 41-01	2DECAL, START
6..	539 10 79-59	1DECAL, WARNING GRAPHICS	15..	587 45 73-01.....	1DECAL, PARK BRAKE
7..	539 11 26-20	1DECAL, BELT ROUTING	16..	587 46 94-01.....	2DECAL, BRAND
8..	587 45 74-01.....	1DECAL, CONSOLE	17..	584 49 04-60.....	1DECAL, DEFLECTOR
9..	581 72 44-01	1DECAL, DEFLECTOR				

ACCESSORIES

ITEM	PART NO.	QTY.	DESCRIPTION	ITEM	PART NO.	QTY.	DESCRIPTION
1..	539 13 03-44.....	1	HOUSING w/DECALS	31..	539 13 03-17.....	1	PIN
2..	539 13 02-93.....	1	COVER, BELT	32..	874 78 05-08.....	6	BOLT $\frac{5}{16}$ -18 x $\frac{1}{2}$
3..	539 13 10-85.....	1	KEEPER, BELT OUTER	33..	532 85 08-57.....	2	BOLT $\frac{3}{8}$ -24 x $1\frac{1}{4}$ GR 8
4..	579 13 76-02.....	2	KEEPER, BELT REAR	34..	874 78 05-16.....	1	BOLT $\frac{5}{16}$ -18 x 1
5..	539 13 03-46.....	1	KEEPER	35..	874 78 06-24.....	1	BOLT $\frac{3}{8}$ -16 x $1\frac{1}{2}$
6..	579 13 77-02.....	1	KEEPER	36..	539 97 69-49.....	1	BOLT $\frac{3}{8}$ -16 x $1\frac{3}{4}$
7..	539 10 57-85.....	1	DECAL, WARNING	37..	817 49 04-08.....	3	BOLT $\frac{1}{4}$ -20 x $\frac{1}{2}$
8..	539 10 67-41.....	1	DECAL, SEVERING	38..	874 78 04-14.....	1	BOLT $\frac{1}{4}$ -20 x $\frac{7}{8}$
9..	579 15 08-02.....	1	PULLEY, IDLER	39..	872 14 05-06.....	4	BOLT $\frac{5}{16}$ -18 x $\frac{3}{4}$ RDHD SQNK
10..	539 13 03-24.....	1	PULLEY	40..	872 14 06-08.....	1	BOLT $\frac{3}{8}$ -16 x 1 RDHD SQNK
11..	539 13 02-92.....	1	IMPELLER	41..	872 14 05-08.....	4	BOLT $\frac{5}{16}$ -18 x 1 RDHD SQNK
12..	539 11 36-83.....	1	V-IDLER	42..	539 99 03-02.....	8	SCREW $\frac{1}{4}$ x $\frac{3}{8}$ THD FRM
13..	539 13 02-95.....	1	HUB, BEARING	43..	871 08 10-10.....	1	SCREW #10-24 x $\frac{5}{8}$
14..	539 13 02-96.....	2	BEARING	44..	539 20 02-82.....	3	NUT $\frac{3}{8}$ -16 HEX JAM NYLOC
15..	539 13 03-01.....	2	BUSHING	45..	539 13 03-13.....	6	NUT $\frac{5}{16}$ -18 TEE
16..	579 13 74-02.....	1	MOUNT, IDLER, UPPER	46..	539 13 03-14.....	11	NUT $\frac{1}{4}$ -20 TEE
17..	579 13 75-02.....	1	MOUNT, IDLER, LOWER	47..	539 10 81-20.....	1	NUT $\frac{1}{4}$ -20 HEX NYLOC
18..	539 13 03-16.....	1	SHAFT, IMPELLER	48..	873 80 05-00.....	9	NUT $\frac{5}{16}$ -18 HEX NYLOC
19..	579 13 73-02.....	1	ARM, IDLER	49..	532 43 81-30.....	1	NUT $\frac{1}{4}$ -20 HEX FLANGE
20..	539 13 03-38.....	1	ARM, TENSION	50..	539 10 80-89.....	1	WELD NUT, PLATED
21..	539 13 03-39.....	1	BRACKET, MOUNT, FRONT	51..	539 91 09-35.....	1	WASHER
22..	539 13 03-40.....	1	BRACKET, MOUNT, REAR	52..	810 03 06-00.....	2	WASHER $\frac{3}{8}$ SPLT LOCK
23..	539 10 19-77.....	1	SPRING, TRACTION	53..	819 13 13-16.....	3	WASHER $\frac{3}{8}$ SAE FLT
24..	539 13 03-23.....	1	SPACER	54..	539 11 03-23.....	2	WASHER, HARDENED
25..	532 10 98-08.....	1	LATCH, HOOD	55..	819 09 10-16.....	4	WASHER $\frac{1}{4}$ FLAT SAE
26..	539 13 03-41.....	1	PLATE, OUTER	56..	539 10 95-52.....	2	WASHER $\frac{3}{16}$ LOCK
27..	539 13 21-24.....	1	PLATE, BACKING	57..	539 10 80-84.....	2	WASHER $\frac{3}{16}$ x $\frac{3}{4}$ x 16 GA
28..	539 13 21-22.....	1	PLATE, BACKING	58..	539 97 69-88.....	1	HAIRPIN
29..	539 11 56-67.....	1	KEY $\frac{3}{16}$ x $\frac{1}{2}$	59..	539 10 47-63.....	1	RETAINER U TYPE
30..	539 12 52-29.....	1	KEY $\frac{3}{16}$ x $1\frac{1}{2}$				

ACCESSORIES

Bagger

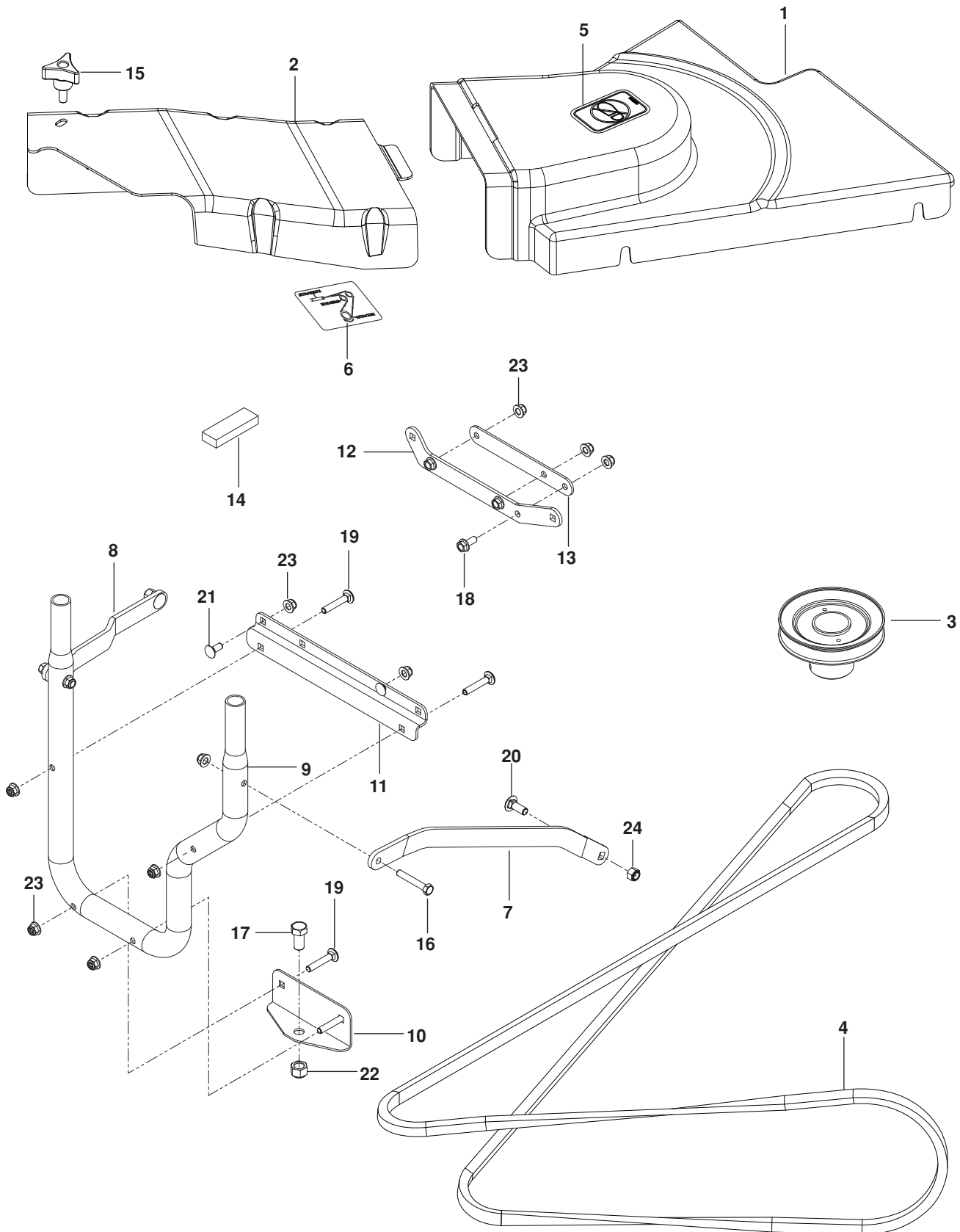


ACCESSORIES

ITEM	PART NO.	QTY.	DESCRIPTION	ITEM	PART NO.	QTY.	DESCRIPTION
1..	532 19 53-73.....	1	COVER	16..	539 10 80-85.....	2	SPACER, SPLIT
2..	532 40 02-26.....	3	CONTAINER, SOFT BAG	17..	539 11 22-94.....	1	FLEX TRIM
3..	532 13 08-95.....	2	HANDLE, BAGGER COVER	18..	539 10 80-96.....	2	HAIR PIN
4..	539 10 80-98.....	1	FRAME, BAGGER	19..	539 99 06-27.....	2	BOLT $\frac{5}{16}$ -18 x $1\frac{1}{4}$ HEX HD
5..	532 19 27-09.....	1	SCREEN, COVER	20..	539 97 69-52.....	7	SCREW #10-24 x $\frac{5}{8}$
6..	539 10 80-97.....	4	PLUG, TUBING END	21..	539 10 80-81.....	1	SCREW #10-14 x $\frac{1}{2}$
7..	522 80 13-01.....	2	PLUG, SPACER	22..	539 10 80-83.....	2	SCREW #10-24 x $1\frac{1}{8}$
8..	532 19 27-86.....	2	PIN, HINGE	23..	539 11 28-99.....	2	NUT $\frac{5}{16}$ -18 HEX FLG NYLOC
9..	532 19 25-50.....	1	SEAL, COVER	24..	539 97 69-77.....	6	NUT #10-24 CROWNLOCK
10..	532 19 26-03.....	1	GASKET, COVER	25..	539 10 80-86.....	2	NUT #10-24 ACORN
11..	539 11 02-81.....	1	SUPPORT, CHUTE	26..	539 10 80-89.....	1	WELD NUT, PLATED
12..	539 10 81-41.....	1	CHUTE, UPPER	27..	819 11 11-16.....	4	WASHER $\frac{5}{16}$ SAE
13..	539 13 02-94.....	1	CHUTE, MIDDLE	28..	539 10 80-84.....	3	WASHER $\frac{3}{16}$ x $\frac{3}{4}$ x 16 GA
14..	539 10 80-82.....	1	INDICATOR, BAG DUMP	29..	539 10 95-52.....	2	WASHER $\frac{3}{16}$ LOCK
15..	539 10 80-88.....	1	LATCH, HOOD				

ACCESSORIES

Guard, Mount and Belt

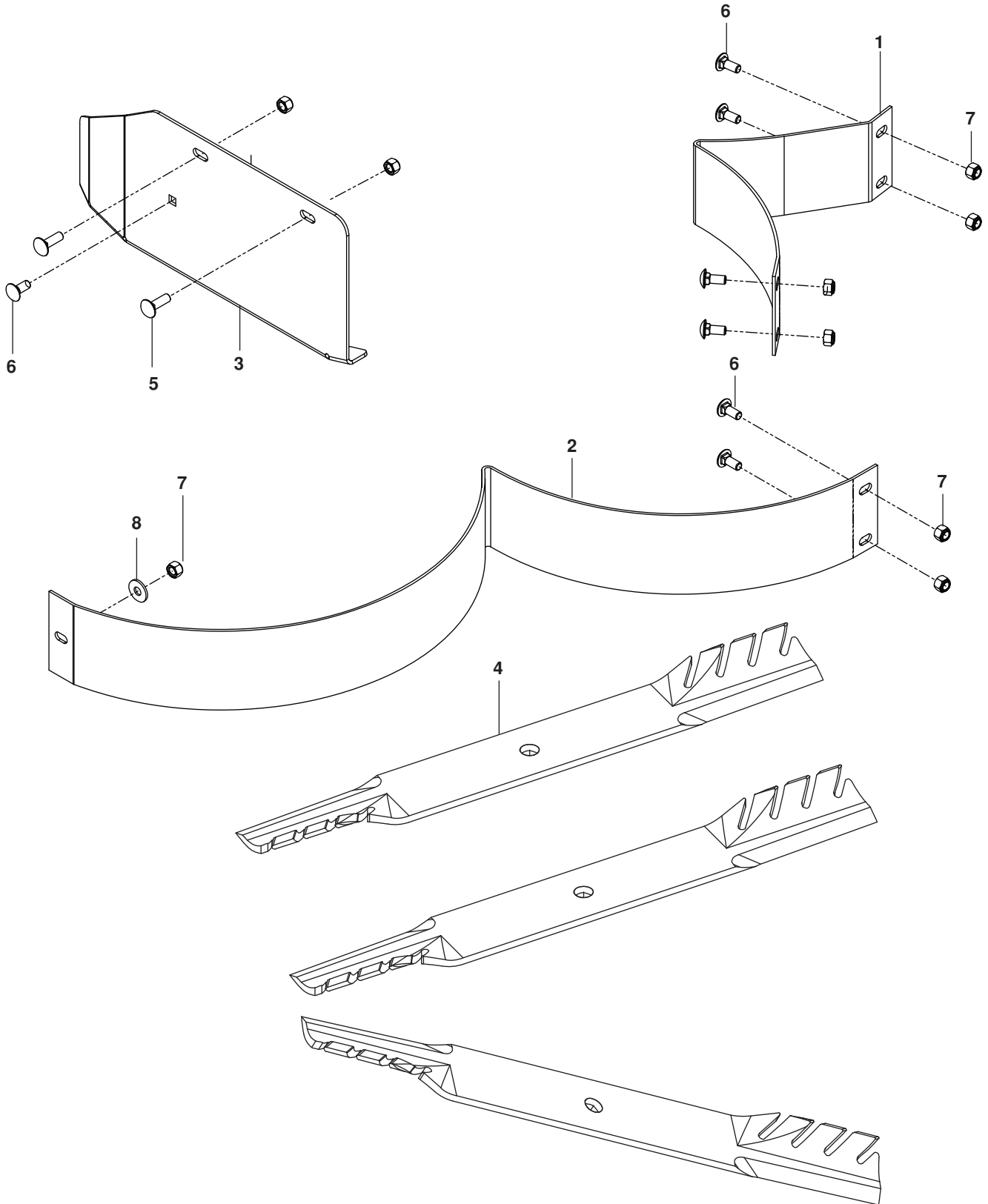


ACCESSORIES

ITEM	PART NO.	QTY.	DESCRIPTION	ITEM	PART NO.	QTY.	DESCRIPTION
1..	539 13 03-08.....	1	SHIELD, BELT, 61"	13..	576 22 15-02.....	1	SPACER PLATE, BLK
2..	539 13 03-09.....	1	COVER, BELT	14..	539 11 02-90.....	1	STRIP, FOAM
3..	539 13 03-21.....	1	PULLEY, 61"	15..	539 10 44-11.....	1	KNOB w/ STUD
4..	539 13 03-48.....	1	BELT, 61"	16..	874 78 05-32	2	BOLT $\frac{5}{16}$ -18 X 2 HEX HD
5..	539 10 57-43.....	1	DECAL, NO STEP	17..	874 78 061-6.....	1	BOLT $\frac{1}{2}$ -13 x 1 HEX HD
6..	539 13 03-49.....	1	DECAL, BELT ROUTING	18..	525 46 47-01.....	3	BOLT $\frac{5}{16}$ -18 x $\frac{3}{4}$ HEX FLG HD
7..	575 95 33-02.....	1	STRAP, LT, BLK	19..	539 99 08-61.....	4	BOLT $\frac{5}{16}$ -16 x $1\frac{1}{4}$ RDHD SQNK
8..	539 13 21-98.....	1	STRAP, RT, BLK	20..	872 14 06-08.....	2	BOLT $\frac{3}{8}$ -16 x 1 RDHD SQNK
9..	539 13 10-91	1	TUBE, MOUNT	21..	872 14 05-06.....	2	BOLT $\frac{5}{16}$ -18 x $\frac{3}{4}$ RDHD SQNK
10..	539 13 21-92.....	1	MOUNT HITCH, LOWER	22..	873 80 08-00.....	1	NUT $\frac{1}{2}$ NYLOC
11..	539 13 21-94.....	1	MOUNT HITCH, UPPER	23..	539 11 28-99.....	11	NUT $\frac{5}{16}$ NYLOC
12..	576 22 14-02.....	1	BRACKET, SUPPORT, BLK	24..	539 97 69-79.....	2	NUT $\frac{3}{8}$ -16 NYLOC

ACCESSORIES

Mulch Kit



ACCESSORIES

ITEM PART NO. QTY. DESCRIPTION

- 1.. 539 11 33-13..... 1BAFFLE, LEFT
- 2.. 539 11 33-15..... 1BAFFLE, RIGHT
- 3.. 539 11 33-27..... 1MULCH CAP
- 4.. 521 98 16-01..... 3BLADE, 21" GATOR

ITEM PART NO. QTY. DESCRIPTION

- 5.. 539 99 02-08..... 2BOLT $\frac{5}{16}$ -18 x 1 RDHD SQNK
- 6.. 539 99 03-16..... 7BOLT $\frac{5}{16}$ -18 x $\frac{3}{4}$ RDHD SQNK
- 7.. 539 99 07-17..... 9HEX NUT $\frac{5}{16}$ -18 NYLOC
- 8.. 539 99 06-92..... 1WASHER $\frac{5}{16}$ STD FLT



Jonsered®

jonsered.com

115 71 43-27 Rev B

2015-03-31